

SW-2, 23 JAN 2025 to 20 FEB 2025

**TOP ALTITUDE:
ASSIGNED BY ATC**

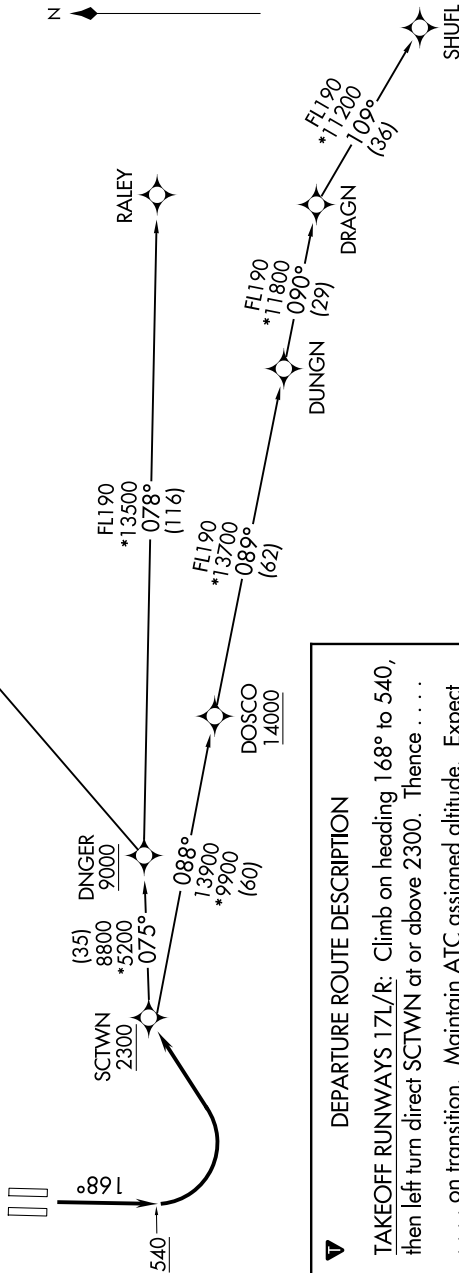
RNAV - DME/DME/IRU or GPS

RADAR required for non-GPS equipped aircraft.

NORCAL DEP CON
127.4 317.5

TAKEOFF MINIMUMS

Rwys 17L/R: Standard with minimum climb of 500' per NM to 540.



DEPARTURE ROUTE DESCRIPTION

TAKEOFF RUNWAYS 17L/R: Climb on heading 168° to 540, then left turn direct SCTWN at or above 2300. Thence

. . . . on transition. Maintain ATC assigned altitude. Expect filed altitude 5 minutes after departure.

MACUS TRANSITION (SCTWN4.MACUS)

RALEY TRANSITION (SCTWN4.RALEY)

SHUFL TRANSITION (SCTWN4.SHUFL)

NOTE: Chart not to scale.

SW-2, 23 JAN 2025 to 20 FEB 2025