

SLMMR FIVE ARRIVAL (RNAV)

AL-5490 (FAA)

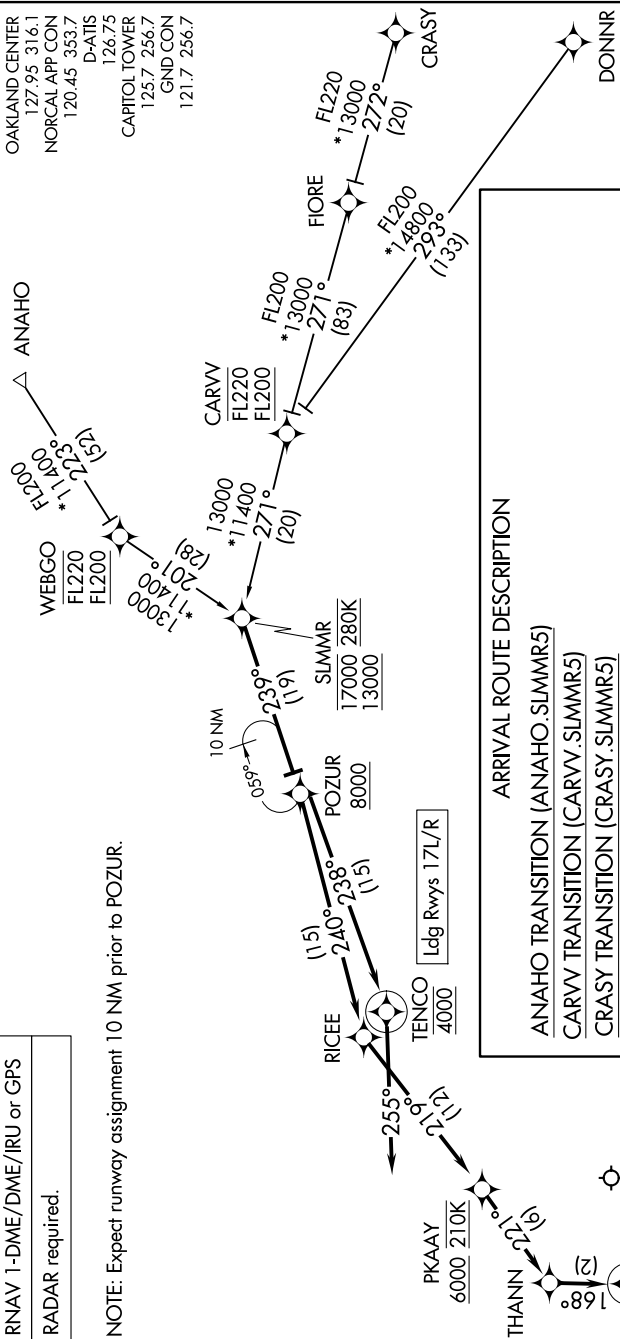
SACRAMENTO INTL (SMF)
SACRAMENTO, CALIFORNIA

SW-2, 23 JAN 2025 to 20 FEB 2025

RNAV 1-DME/DME/IRU or GPS
RADAR required.

NOTE: Expect runway assignment 10 NM prior to POZUR.

OAKLAND CENTER
127.95 316.1
NORCAL APP CON
120.45 353.7
D-ATIS
126.75
CAPITOL TOWER
125.7 256.7
GND CON
121.7 256.7



ARRIVAL ROUTE DESCRIPTION

- ANAHO TRANSITION (ANAHO.SLMMR5)
- CARVV TRANSITION (CARVV.SLMMR5)
- CRASY TRANSITION (CRASY.SLMMR5)
- DONNR TRANSITION (DONNR.SLMMR5)
- WEBGO TRANSITION (WEBGO.SLMMR5)

From SLMMR on track 239° to cross POZUR at or above 8000.
 LANDING RUNWAYS 17L/R: From POZUR on track 238° to cross TENCO at 4000, then on track 255°. Expect RADAR vectors for assigned instrument approach procedure.
 LANDING RUNWAYS 35L/R: From POZUR on track 240° to RICEE, then on track 219° to cross PKAAY at or above 6000 and at 210K, then on track 221° to THANN, then on track 168° to cross BANZA at 4000 and at 210K, then on track 168°. Expect RADAR vectors to final approach course.

NOTE: Chart not to scale.

SW-2, 23 JAN 2025 to 20 FEB 2025