

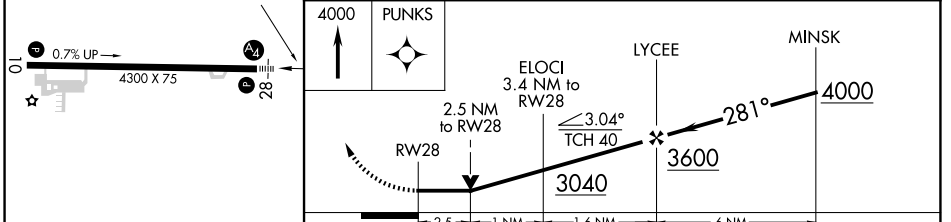
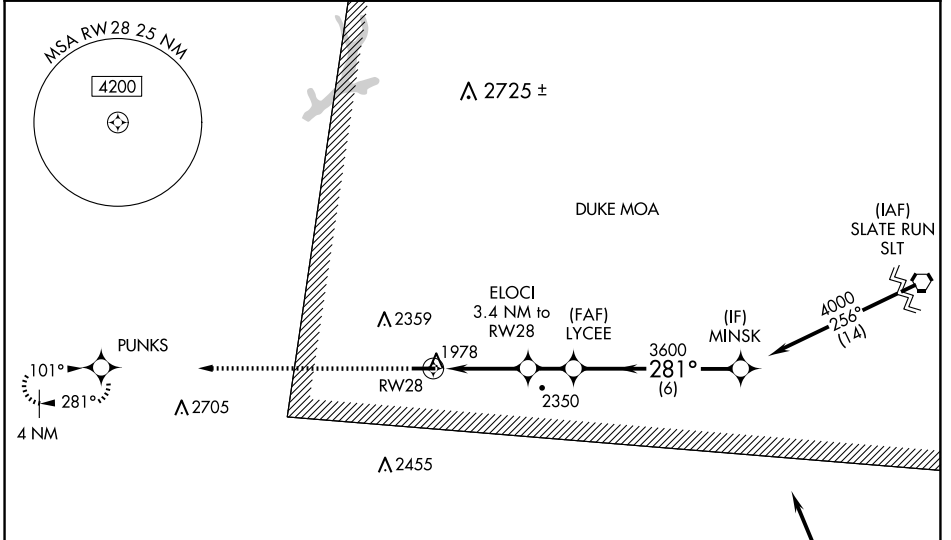
| | | |
|-------------|----------|-------------|
| APP CRS | Rwy Idg | 4300 |
| 281° | TDZE | 1934 |
| | Apt Elev | 1934 |

RNAV (GPS) RWY 28

ST MARYS MUNI (OYM)

| | | | |
|--|-------|----------|---|
| RNP APCH - GPS. | | MALS | MISSED APPROACH: Climb to 4000 direct PUNKS and hold. |
| Rwy 28 helicopter visibility reduction below 3/4 SM NA. Inop table does not apply to LNAV Cat A. VDP NA when using Bradford altimeter setting. When local altimeter setting not received, use Bradford altimeter setting and increase all MDA 240 feet, LNAV visibility Cats B/C/D 1/2 SM, and Circling visibility Cats B/C 1/2 SM. For inop ALS increase LNAV visibility Cat C/D to 2 1/2 SM. For inop ALS when using Bradford altimeter setting, increase LNAV visibility Cat C/D to 3 SM. | -36°C | | |

| | | | |
|--------------------------|---|----------------------------------|---------------------------------|
| AWOS-3P 118.05 | CLEVELAND CENTER 126.725 291.65 | ALTOONA CLNC DEL 122.4 | UNICOM 122.7 (CTAF) 0 |
|--------------------------|---|----------------------------------|---------------------------------|



| CATEGORY | A | B | C | D |
|----------|------------|-----------------|-------------------------------|------------------------|
| LNAV MDA | 2760-1 | 826 (900-1) | 2760-2 | 826 (900-2) |
| CIRCLING | 2760-1 1/4 | 826 (900-1 1/4) | 2760-2 1/2 826 (900-2 1/2) | 2840-3 906 (1000-3) |

NE-4, 23 JAN 2025 to 20 FEB 2025

NE-4, 23 JAN 2025 to 20 FEB 2025