


VORTAC SLT <b>113.9</b> Chan <b>86</b>	APP CRS <b>264°</b>	Rwy Idg <b>4300</b> TDZE <b>1934</b> Apt Elev <b>1934</b>
--	------------------------	---

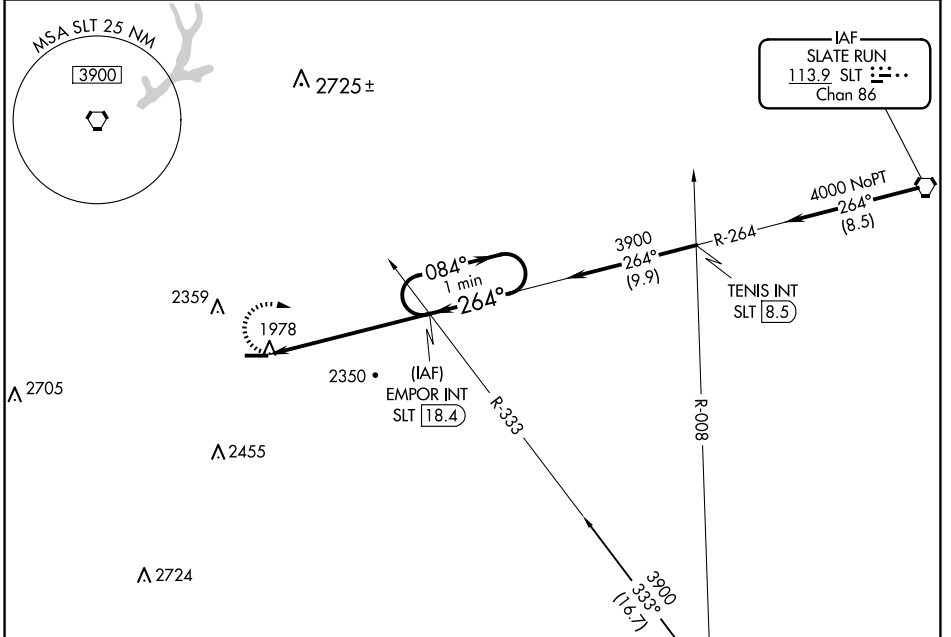
**VOR RWY 28**  
ST MARYS MUNI (OYM)

**⚠** Night landing: Rwy 28 NA. Helicopter visibility reduction below 1 SM NA. When local altimeter setting not received, use Bradford altimeter setting and increase all MDA 240 feet, and S-28 Cat B and Circling Cat B/C visibility ¼ mile and S-28 Cat C/D ½ mile. Inoperative table does not apply to Cats C/D.

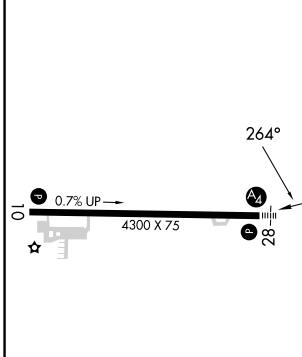
**MALS** 

**MISSED APPROACH:** Climbing right turn to 3900 via SLT R-264 to EMPOR INT/18.4 DME and hold.

AWOS-3P <b>118.05</b>	CLEVELAND CENTER <b>126.725 291.65</b>	ALTOONA CLNC DEL <b>122.4</b>	UNICOM <b>122.7 (CTAF) 0</b>
--------------------------	---	----------------------------------	---------------------------------



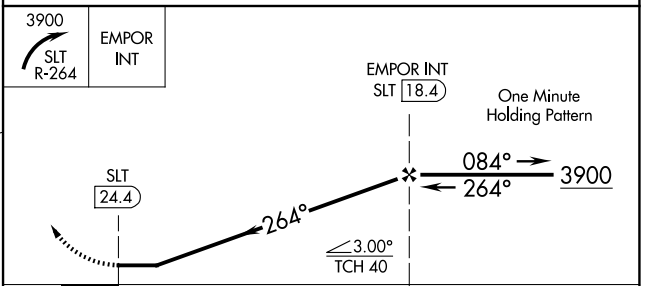
ELEV 1934	TDZE 1934
-----------	-----------



MIRL Rwy 10-28 **0**

FAF to MAP 6.1 NM

Knots	60	90	120	150	180
Min:Sec	6:06	4:04	3:03	2:26	2:02



CATEGORY	A	B	C	D
S-28	2820-1	886 (900-1)	2820-2½	886 (900-2½)
CIRCLING	2820-1¼	886 (900-1¼)	2820-2¾	2820-3
			886 (900-2¾)	886 (900-3)

NE-4, 23 JAN 2025 to 20 FEB 2025

NE-4, 23 JAN 2025 to 20 FEB 2025