

WAAS CH <b>73038</b> <b>W36A</b>	APP CRS <b>002°</b>	Rwy Idg TDZE <b>540</b> Apt Elev <b>541</b>	<b>4002</b>
--	------------------------	---	-------------

# RNAV (GPS) RWY 36

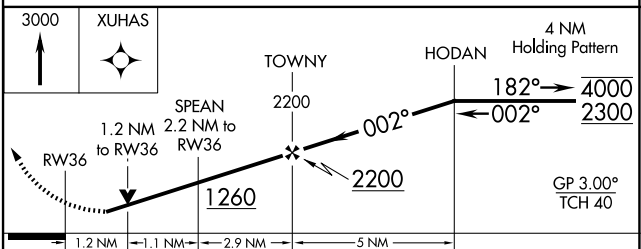
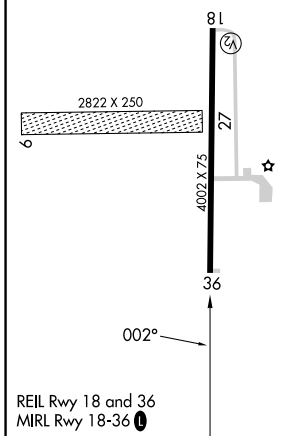
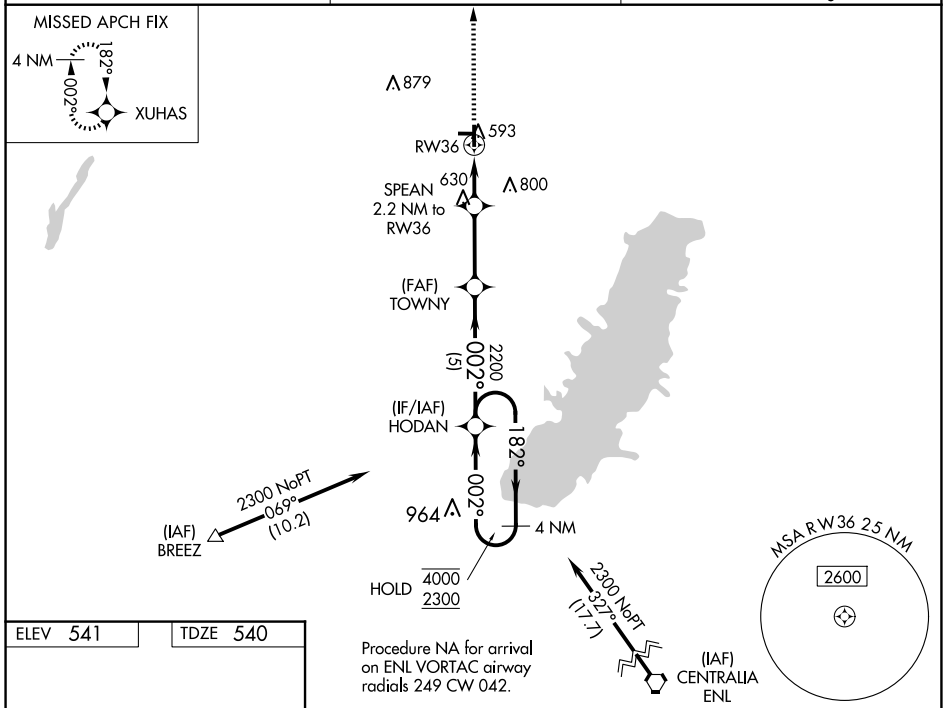
GREENVILLE (GR.E)

RNP APCH - GPS.

**NA** Rwy 36 helicopter visibility reduction below 3/4 SM NA. Circling NA to Rwy 9 and 27. Procedure NA at night. For uncompensated Baro-VNAV systems, LNAV/VNAV NA below -16°C or above 54°C. When local altimeter setting not received, use Salem altimeter setting and increase LPV DA to 910 feet; increase LNAV/VNAV DA to 904 feet; increase all MDAs 60 feet and LNAV visibility Cat C/D 1/4 SM, and Circling visibility Cat D 1/4 SM. Baro-VNAV and VDP NA when using Salem altimeter setting.

**MISSED APPROACH:**  
Climb to 3000 direct XUHAS and hold.

AWOS-AV <b>123.05</b>	KANSAS CITY CENTER <b>124.3 269.15</b>	UNICOM <b>123.05 (CTAF) 0</b>
--------------------------	---	----------------------------------



CATEGORY	A	B	C	D
LPV DA		853-1	313 (400-1)	
LNAV/VNAV DA		847-1	307 (400-1)	
LNAV MDA	940-1	400 (400-1)	940-1 1/8	400 (400-1 1/8)
<b>CIRCLING</b>	980-1 439 (500-1)	1000-1 459 (500-1)	1220-2 679 (700-2)	1240-2 1/4 699 (700-2 1/4)

EC-3, 23 JAN 2025 to 20 FEB 2025

EC-3, 23 JAN 2025 to 20 FEB 2025