

# CLTCH THREE DEPARTURE (RNAV)

NE-3, 23 JAN 2025 to 20 FEB 2025

**TOP ALTITUDE:**  
3000

P-568



P-56A



## DEPARTURE ROUTE DESCRIPTION

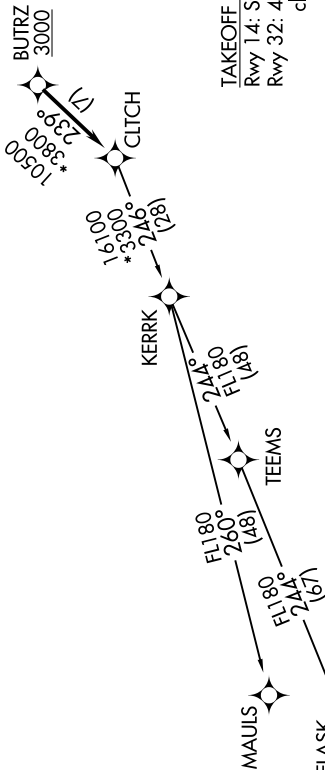
Climb on heading assigned by ATC, expect RADAR vectors to BUTRZ, then on track 239° to CLTCH, thence....

....on assigned transition, maintain altitude assigned by ATC, expect clearance to filed altitude within ten (10) minutes after departure.

FLASK TRANSITION (CLTCH3.FLASK)  
MAULS TRANSITION (CLTCH3.MAULS)

POTOMAC DEP CON  
118.95 257.2  
ATIS  
128.175  
CLNC DEL  
351.8  
GND CON  
121.9 351.8  
DAVISON TOWER ★  
124.275 (CTAF) 229.4

NOTE: RNAV 1.  
NOTE: RADAR required.  
NOTE: DME/DME/IRU or GPS required.  
NOTE: Turbo-jets only.



### TAKEOFF MINIMUMS:

Rwy 14: Standard.  
Rwy 32: 400-2 or Standard with minimum climb of 300' per NM to 500'.

NOTE: Chart not to scale.

# CLTCH THREE DEPARTURE (RNAV)

(CLTCH3.CLTCH) 31DEC20

NE-3, 23 JAN 2025 to 20 FEB 2025