

FORT BELVOIR, VIRGINIA

ILS or LOC RWY 32

LOC/DME I-DAA 108.9 Chan 26	APCH CRS 322°	Rwy Ildg TDZE Arprt Elev 4529 68 74
---	-------------------------	---

[USA]

DAVISON AAF (KDAV)

RADAR required for procedure entry from DCA VOR.

- * When ALS inop, increase RVR to 45, vis to 7/8 mile.
- ** When ALS inop, increase CAT AB RVR to 55, vis to 1 mile, CAT CD vis to 1 1/8 miles.
- *** When ALS inop, increase CAT AB RVR to 55, vis to 1 mile, CAT CD vis to 1 1/8 miles.

MALSF



MISSED APPROACH: Climb to 800, then climbing left turn to 3000 direct to HAXIL (DCA R-181/17.4 DME) and hold. Continue climb in hold to 3000.

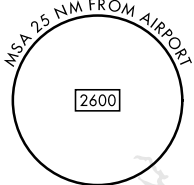
ATIS 128.175	POTOMAC APP CON 118.95 319.1	TOWER * 124.275 (CTAF) 0 229.4	GND CON 121.9 351.8	CLNC DEL 351.8	PAR
------------------------	--	---	-------------------------------	--------------------------	-----

† If local altimeter setting not received, use Ronald Reagan Washington National altimeter setting. 528

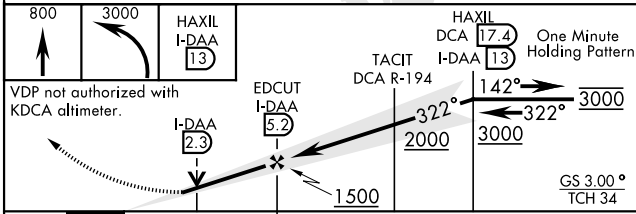
Visibility reduction by helicopters not authorized.

WASHINGTON
111.0 DCA
Chan 47
7400

Feeder from DCA for contingency use only.



EMERG SAFE ALT 100 NM 5300



ELEV 74	TDZE 68
---------	---------

Rwy 14 Ildg 4930'
Rwy 32 Ildg 4529'

CATEGORY	A	B	C	D
S-ILS 32*	348/40 280		(300-3/4)	
S-LOC 32**	580/40	512 (600-3/4)	580-1 1/4	512 (600-1 1/4)
CIRCLING	680-1	720-1	760-2	1000-3
	606 (700-1)	646 (700-1)	686 (700-2)	926 (1000-3)
† RONALD REAGAN WASHINGTON NATIONAL ALTIMETER SETTING MINIMUMS				
S-ILS 32	388/40 320		(400-3/4)	
S-LOC 32***	620/40	552 (600-3/4)	620-1 1/8	552 (600-1 1/8)
CIRCLING	720-1	760-1	800-2	1040-3
	646 (700-1)	686 (700-1)	726 (800-2)	966 (1000-3)

HIRL Rwy 14-32

FAF to MAP 4.4 NM					
Knots	60	90	120	150	180
Min:Sec	4:24	2:56	2:12	1:46	1:28

FORT BELVOIR, VIRGINIA

38°43'N-77°11'W

DAVISON AAF (KDAV)

Amtd 1 23JAN25

ILS or LOC RWY 32

NE-3, 23 JAN 2025 to 20 FEB 2025

NE-3, 23 JAN 2025 to 20 FEB 2025