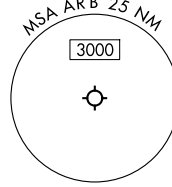


**TOP ALTITUDE:  
ASSIGNED BY ATC**

RNAV 1 - DME/DME/IRU or GPS.

RADAR required.

DETROIT DEP CON  
118.95 284.0  
ATIS  
134.55  
CLNC DEL  
121.6  
GND CON  
121.6  
ANN ARBOR TOWER ★  
120.3 (CTAF)



**TAKEOFF MINIMUMS:**

Rwys 6, 24: Standard.

Rwys 12, 30: NA-Environmental.

NOTE: Turbojet departures at/above 10000, maintain 280K until advised by ATC.

NOTE: Chart not to scale.

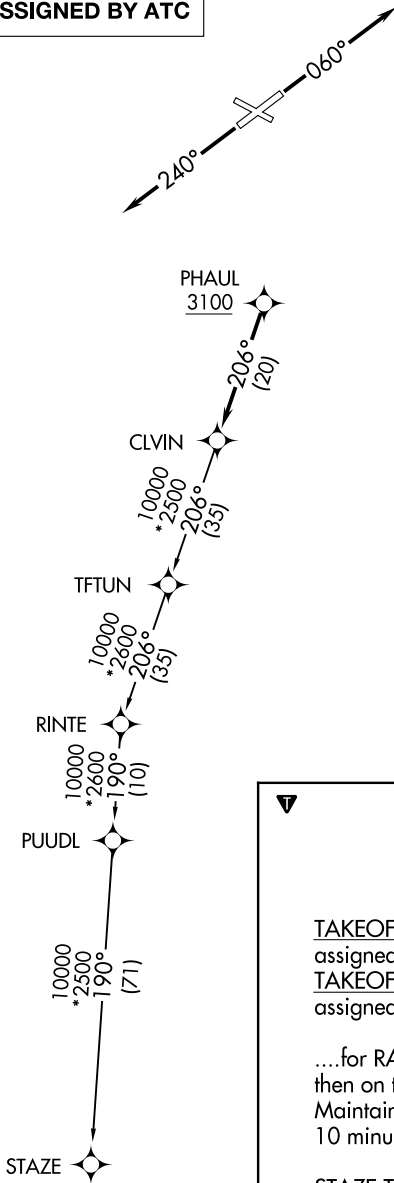
**DEPARTURE ROUTE DESCRIPTION**

TAKEOFF RUNWAY 6: Climb on heading 060° or as assigned by ATC, thence....

TAKEOFF RUNWAY 24: Climb on heading 240° or as assigned by ATC, thence....

....for RADAR vectors to cross PHAUL at or above 3100, then on track 206° to CLVIN, then on (transition). Maintain ATC assigned altitude, expect filed altitude 10 minutes after departure.

STAZE TRANSITION (CLVIN3.STAZE):



EC-1, 23 JAN 2025 to 20 FEB 2025

EC-1, 23 JAN 2025 to 20 FEB 2025