

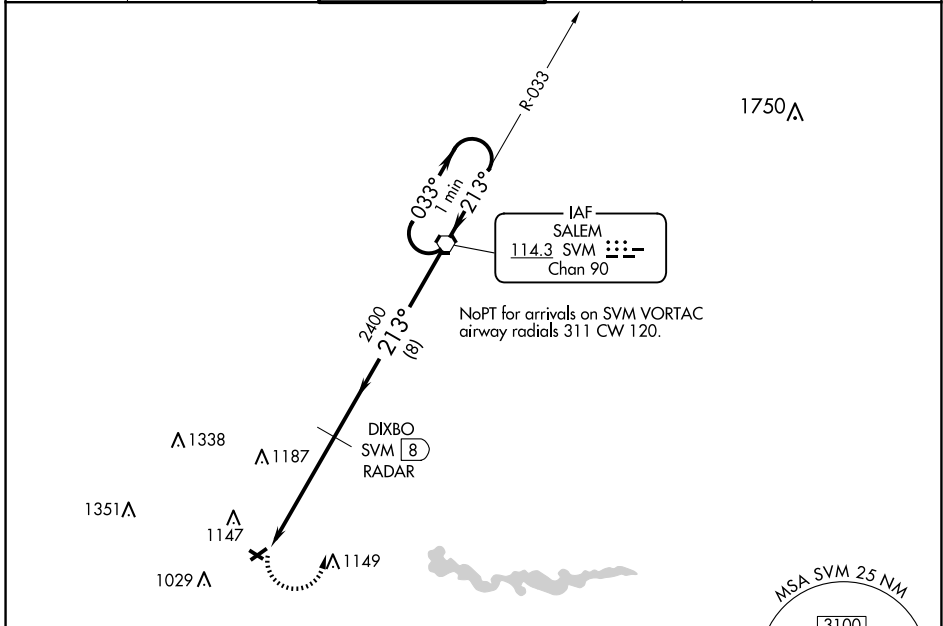
VORTAC SVM <b>114.3</b> Chan <b>90</b>	APP CRS <b>213°</b>	Rwy Idg TDZE Apt Elev	<b>3505</b> <b>831</b> <b>839</b>
--	------------------------	-----------------------------	---

**VOR RWY 24**  
ANN ARBOR MUNI (ARB)

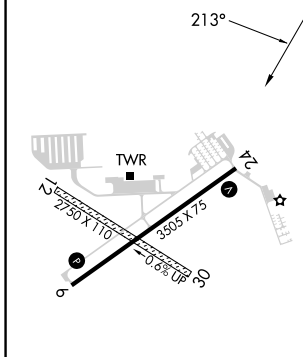
⚠ Inop table does not apply. Rwy 24 helicopter visibility reduction below 3/4 SM NA.  
 ⚠ When local altimeter setting not received, use Willow Run altimeter setting and increase all MDAs 40 feet and increase visibility S-24 Cat C/D visibility 1/8 SM and Circling Cat C/D visibility 1/4 SM. Circling NA to Rwys 12 and 30.

MISSED APPROACH: Climbing left turn to 3000 direct SVM VORTAC and hold.

ATIS <b>134.55</b>	DETROIT APP CON <b>118.95 284.0</b>	ANN ARBOR TOWER ★ <b>120.3 (CTAF) 0</b>	GND CON <b>121.6</b>	CLNC DEL <b>121.6</b>	UNICOM <b>123.0</b>
-----------------------	--	--	-------------------------	--------------------------	------------------------



ELEV 839	TDZE 831
----------	----------

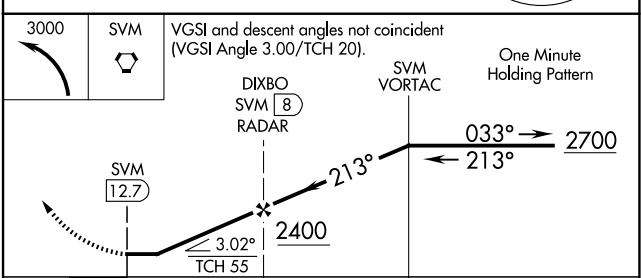


MIRL Rwy 6-24 0  
REIL Rwy 6 0

FAF to MAP 4.7 NM

Knots	60	90	120	150	180
Min:Sec	4:42	3:08	2:21	1:53	1:34

**DME or RADAR REQUIRED**



CATEGORY	A	B	C	D
S-24	1460-1	629 (700-1)	1460-1 3/4 629 (700-1 3/4)	1460-1 3/4 629 (700-1 3/4)
CIRCLING	1500-1	661 (700-1)	1500-1 3/4 661 (700-1 3/4)	1640-2 1/2 801 (900-2 1/2)

EC-1, 23 JAN 2025 to 20 FEB 2025

EC-1, 23 JAN 2025 to 20 FEB 2025