

(ZETTR4.ZETTR) 24137

ZETTR FOUR DEPARTURE (RNAV)

AL-5506 (FAA)

ANN ARBOR MUNI (ARB)

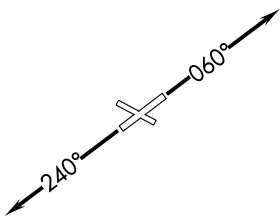
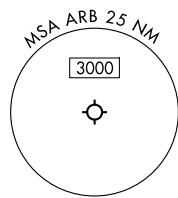
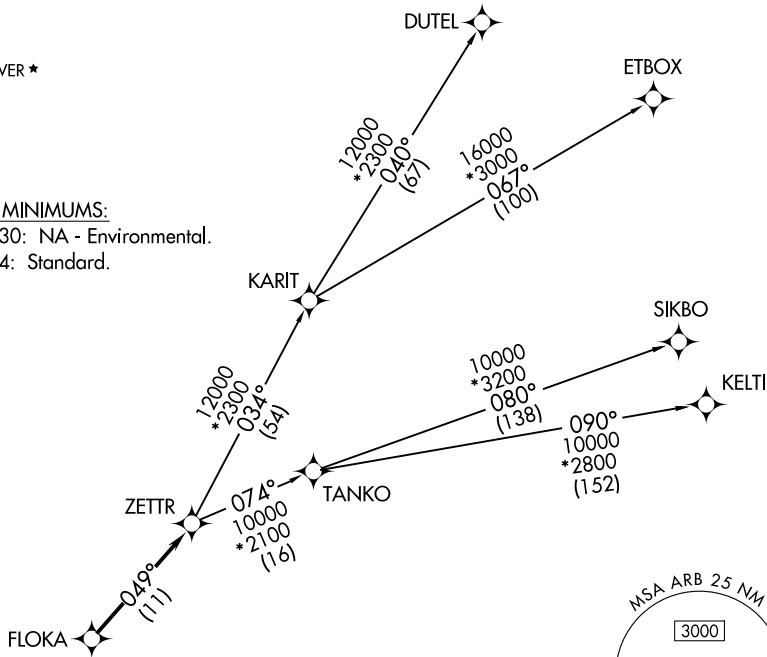
ANN ARBOR, MICHIGAN

DETROIT DEP CON
118.95 284.0
ATIS
134.55
CLNC DEL
121.6
GND CON
121.6
ANN ARBOR TOWER *
120.3 (CTAF)

RNAV 1 - DME/DME/IRU or GPS.
RADAR required.

**TOP ALTITUDE:
ASSIGNED BY ATC**

TAKEOFF MINIMUMS:
Rwys 12, 30: NA - Environmental.
Rwys 6, 24: Standard.



NOTE: Turbojet departures at/above 10000, maintain 280K until advised by ATC.
NOTE: TANKO Transition: For use by CYYZ area arrivals only, or as assigned by ATC.

NOTE: Chart not to scale.

▼ DEPARTURE ROUTE DESCRIPTION

TAKEOFF RUNWAY 6: Climb on heading 060° or as assigned by ATC, then....

TAKEOFF RUNWAY 24: Climb on heading 240° or as assigned by ATC, then....

....for RADAR vectors to FLOKA, then on track 049° to ZETTR, then on (transition). Maintain ATC assigned altitude, expect filed altitude 10 minutes after departure.

DUTEL TRANSITION (ZETTR4.DUTEL):

ETBOX TRANSITION (ZETTR4.ETBOX):

KELTI TRANSITION (ZETTR4.KELTI):

SIKBO TRANSITION (ZETTR4.SIKBO):

TANKO TRANSITION (ZETTR4.TANKO):

ZETTR FOUR DEPARTURE (RNAV)
(ZETTR4.ZETTR) 16MAY24

ANN ARBOR, MICHIGAN
ANN ARBOR MUNI (ARB)

EC-1, 23 JAN 2025 to 20 FEB 2025

EC-1, 23 JAN 2025 to 20 FEB 2025