

WAAS CH 42738 W02A	APP CRS 017°	Rwy Idg 6904 TDZE 24 Apt Elev 26
--	------------------------	---

RNAV (GPS) RWY 2

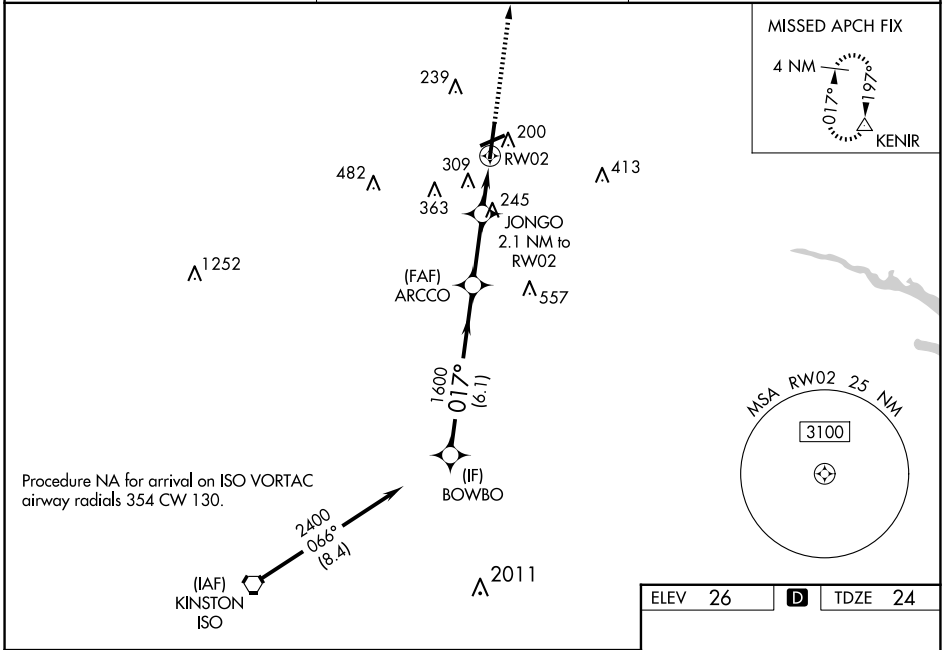
PITT-GREENVILLE (PGV)

RNP APCH-GPS.

⚠ Baro-VNAV NA when using Washington altimeter setting. For uncompensated Baro-VNAV systems, LNAV/VNAV NA below -15°C or above 50°C. Rwy 2 helicopter visibility reduction below 3/4 SM NA. When local altimeter setting not received use Washington altimeter setting and increase LPV DA to 444 feet, visibility all Cats 1/8 SM; increase LNAV/VNAV DA to 661; increase all MDAs 60 feet, LNAV visibility Cat C and D and Circling Cat D 1/4 SM. VDP NA when using Washington altimeter setting.

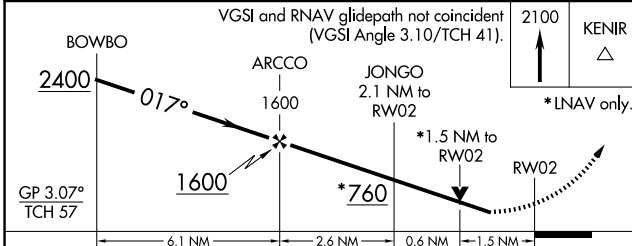
MISSED APPROACH: Climb to 2100 direct KENIR and hold.

AWOS-3 128.425	WASHINGTON CENTER 123.85 279.65	UNICOM 122.8 (CTAF)
--------------------------	---	-------------------------------

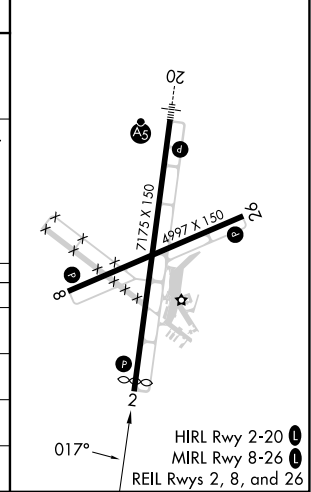


Procedure NA for arrival on ISO VORTAC
airway radials 354 CW 130.

ELEV 26	D	TDZE 24
---------	----------	---------



CATEGORY	A	B	C	D
LPV DA	403-1		379 (400-1)	
LNAV/VNAV DA	620-1 3/4		596 (600-1 3/4)	
LNAV MDA	540-1	516 (600-1)	540-1 3/8	516 (600-1 3/8)
C CIRCLING	600-1 574 (600-1)	620-1 594 (600-1)	700-2 674 (700-2)	800-2 1/2 774 (800-2 1/2)



SE-2, 23 JAN 2025 to 20 FEB 2025

SE-2, 23 JAN 2025 to 20 FEB 2025