

WAAS CH <b>87011</b> <b>W20A</b>	APP CRS <b>197°</b>	Rwy Idg TDZE Apt Elev <b>6505</b> <b>25</b> <b>26</b>
--	------------------------	--

# RNAV (GPS) RWY 20

PITT-GREENVILLE (PGV)

RNP APCH - GPS.

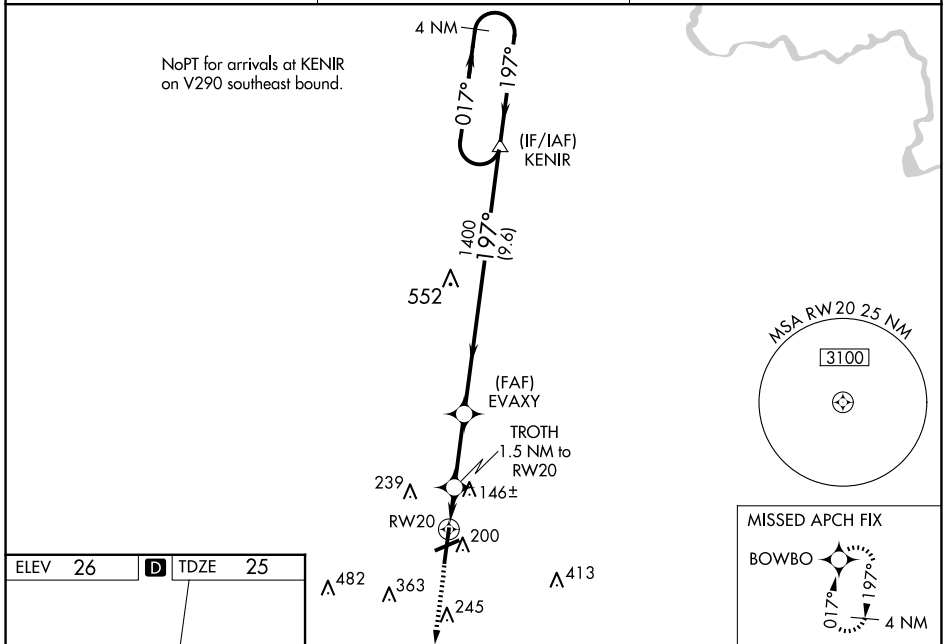
**⚠** Baro-VNAV NA when using Washington altimeter setting. For uncompensated Baro-VNAV systems, LNAV/VNAV NA below -15°C or above 50°C. When local altimeter setting not received use Washington altimeter setting and increase LPV DA to 272 feet; increase LNAV/VNAV DA to 345; increase all MDAs 60 feet and Circling visibility Cat D ¼ SM. For inop ALS, increase LNAV/VNAV all Cats visibility to ¾ mile and LNAV all Cats visibility to 1 mile. For inop ALS when using Washington altimeter setting, increase LNAV/VNAV all Cats visibility ½ SM, and LNAV visibility Cat A/B ¼ SM. Rwy 20 helicopter visibility reduction below ¾ SM NA.

MALSR

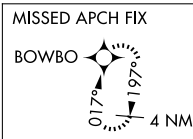
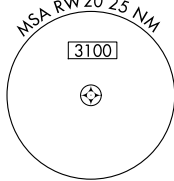


**MISSED APPROACH:**  
Climb to 3100 direct BOWBO and hold, continue climb-in-hold to 3100.

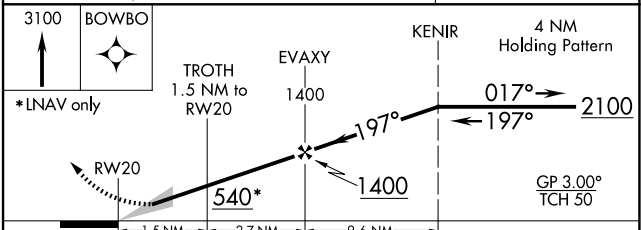
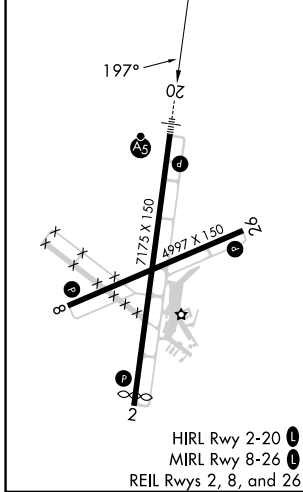
AWOS-3 <b>128.425</b>	WASHINGTON CENTER <b>123.85 279.65</b>	UNICOM <b>122.8 (CTAF) 0</b>
--------------------------	---	---------------------------------



NoPT for arrivals at KENIR on V290 southeast bound.



ELEV 26	<b>D</b>	TDZE 25
---------	----------	---------



CATEGORY	A	B	C	D
LPV DA		231-½	205 (300-½)	
LNAV/VNAV DA		304-¾	278 (300-¾)	
LNAV MDA		400-¾	374 (400-¾)	
<b>C</b> CIRCLING	600-1 574 (600-1)	620-1 594 (600-1)	700-2 674 (700-2)	800-2½ 774 (800-2½)

SE-2, 23 JAN 2025 to 20 FEB 2025

SE-2, 23 JAN 2025 to 20 FEB 2025