

WAAS CH 97731 W28A	APP CRS 283°	Rwy Idg TDZE Apt Elev	5006 906 906
--	------------------------	-----------------------------	---

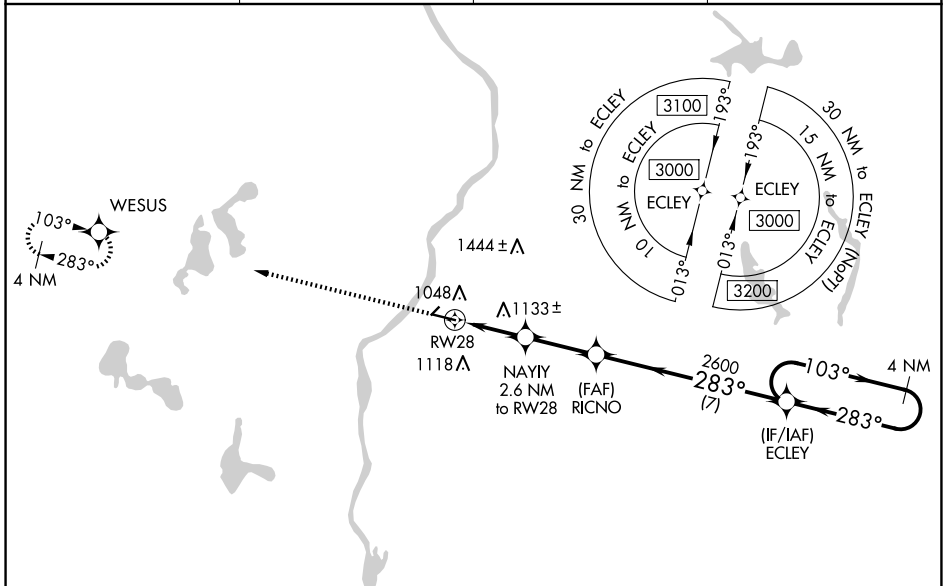
RNAV (GPS) RWY 28

LO SIMENSTAD MUNI (OEO)

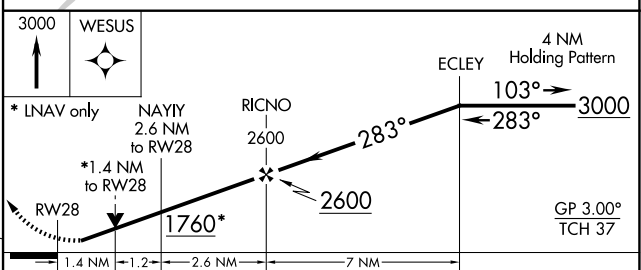
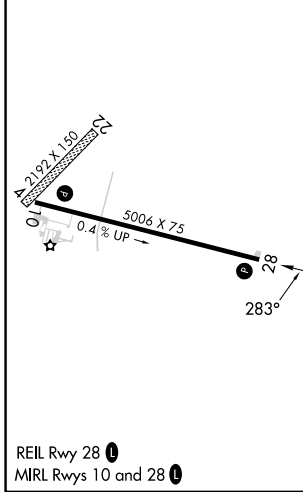
RNP APCH - GPS.	MISSED APPROACH: Climb to 3000 direct WESUS and hold.
-----------------	---

▼ For uncompensated Baro-VNAV systems, LNAV/VNAV NA below -16°C or above 54°C. VDP and Baro-VNAV NA when using Anoka County/Blaine (Janes Fld) altimeter setting. Rwy 28 helicopter visibility reduction below 3/4 SM NA. When local altimeter setting not received, use Anoka County/Blaine (Janes Fld) altimeter setting: increase LPV DA to 1163 feet and visibility all Cats 1/8 SM; increase LNAV/VNAV DA to 1236 feet and visibility all Cats 1/4 SM; increase all MDAs 60 feet and visibility LNAV Cat C 1/8 SM and Circling Cat C 1/4 SM. Circling NA to Rwy 4 and 22.

AWOS-3 119.925	MINNEAPOLIS APP CON 121.2 335.65	GCO 121.725	CTAF 122.90
--------------------------	--	-----------------------	-----------------------



ELEV 906	TDZE 906
----------	----------



CATEGORY	A	B	C	D
LPV DA	1106-3/4	200 (200-3/4)		NA
LNAV/VNAV DA	1179-7/8	273 (300-7/8)		NA
LNAV MDA	1400-1	494 (500-1)	1400-1 3/8 494 (500-1 3/8)	NA
<input checked="" type="checkbox"/> CIRCLING	1400-1 494 (500-1)	1500-1 594 (600-1)	1520-1 3/4 614 (700-1 3/4)	NA

EC-3, 23 JAN 2025 to 20 FEB 2025

EC-3, 23 JAN 2025 to 20 FEB 2025