

AL-5535 (FAA)

# RNAV (GPS) RWY 21

GRAHAM MUNI (RPH)

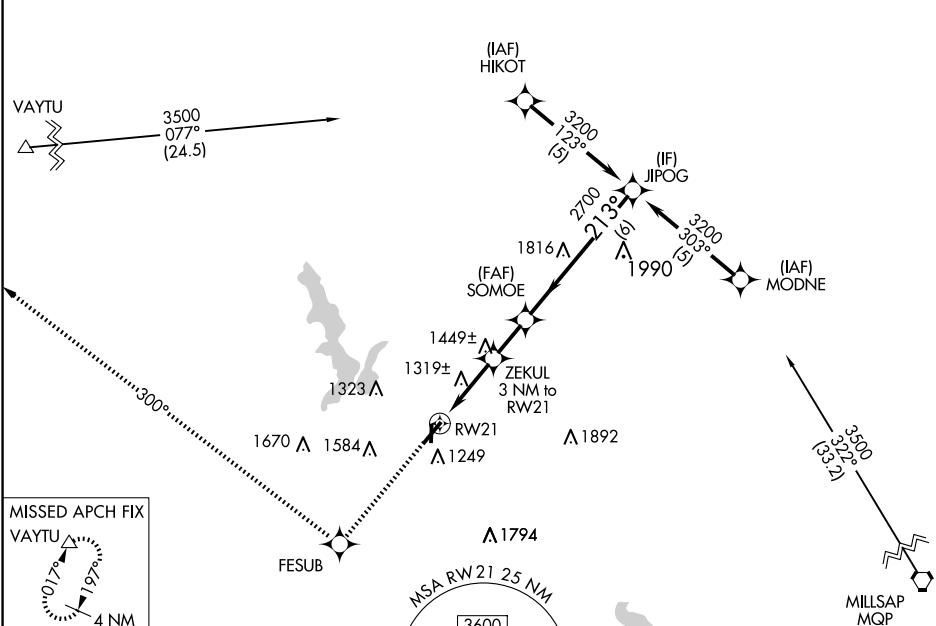
APP CRS	Rwy Idg	<b>5000</b>
<b>213°</b>	TDZE	<b>1114</b>
	Apt Elev	<b>1123</b>

RNP APCH.

▼ When local altimeter setting not received, use Mineral Wells altimeter setting and increase all  
 ▲ MDAs 100 feet. Rwy 21 helicopter visibility reduction below 1 SM NA. Procedure NA at night.

MISSED APPROACH:  
 Climb to 3900 direct  
 FESUB and via 300°  
 track to VAYTU and hold.

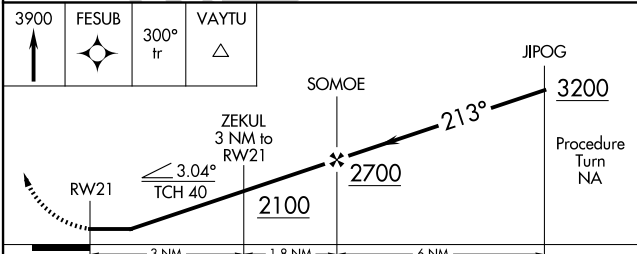
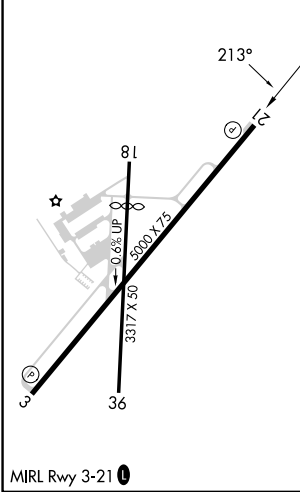
AWOS-3P <b>118.025</b>	FORT WORTH CENTER <b>127.0 360.6</b>	UNICOM <b>122.975 (CTAF)</b>
---------------------------	---	---------------------------------



SC-2, 23 JAN 2025 to 20 FEB 2025

SC-2, 23 JAN 2025 to 20 FEB 2025

ELEV 1123	TDZE 1114
-----------	-----------



CATEGORY	A	B	C	D
LNAV MDA	1700-1	586 (600-1)	NA	
CIRCLING	1700-1	577 (600-1)	NA	

Procedure NA for arrivals on  
 MQP VORTAC via airway  
 radials 265 CW 001.