

# LUFKIN THREE DEPARTURE

HOUSTON, TEXAS

ATIS ★  
 118.125  
 CLNC DEL  
 121.4  
 CLNC DEL  
 119.25 (when twr closed)  
 GND CON  
 121.4  
 SUGAR LAND TOWER ★  
 118.65 (CTAF)  
 HOUSTON DEP CON  
 123.8 257.7

**TOP ALTITUDE:  
ASSIGNED BY ATC**

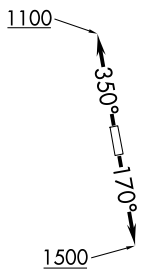
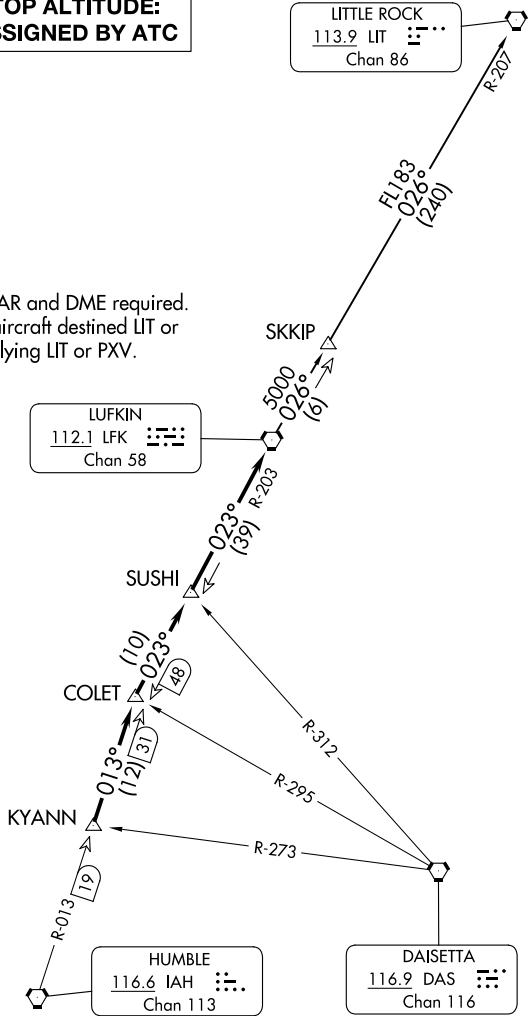
LITTLE ROCK  
 113.9 LIT  
 Chan 86

NOTE: RADAR and DME required.  
 NOTE: For aircraft destined LIT or  
 overflying LIT or PXV.

LUFKIN  
 112.1 LFK  
 Chan 58

DAISSETA  
 116.9 DAS  
 Chan 116

HUMBLE  
 116.6 IAH  
 Chan 113



TAKEOFF MINIMUMS  
 Rwys 17, 35: Standard.

NOTE: Chart not to scale.

(CONTINUED ON FOLLOWING PAGE)

SC-5, 23 JAN 2025 to 20 FEB 2025

SC-5, 23 JAN 2025 to 20 FEB 2025

# LUFKIN THREE DEPARTURE



## DEPARTURE ROUTE DESCRIPTION

TAKEOFF RUNWAY 17: Climb on heading 170° to 1500 before turning. When entering controlled airspace, climb on assigned heading for RADAR vectors to KYANN INT. Maintain ATC assigned altitude. Expect filed altitude 10 minutes after departure, thence. . . .

TAKEOFF RUNWAY 35: Climb on heading 350° to 1100 before turning. When entering controlled airspace, climb on assigned heading for RADAR vectors to KYANN INT. Maintain ATC assigned altitude. Expect filed altitude 10 minutes after departure, thence. . . .

. . . .on IAH R-013 to COLET INT, then right turn on LFK R-203 to LFK VORTAC.

LITTLE ROCK TRANSITION (LFK3.LIT): From over LFK VORTAC on LFK R-026 to SKKIP INT, then on LFK R-026 and LIT R-207 to LIT VORTAC.

SC-5, 23 JAN 2025 to 20 FEB 2025

SC-5, 23 JAN 2025 to 20 FEB 2025