

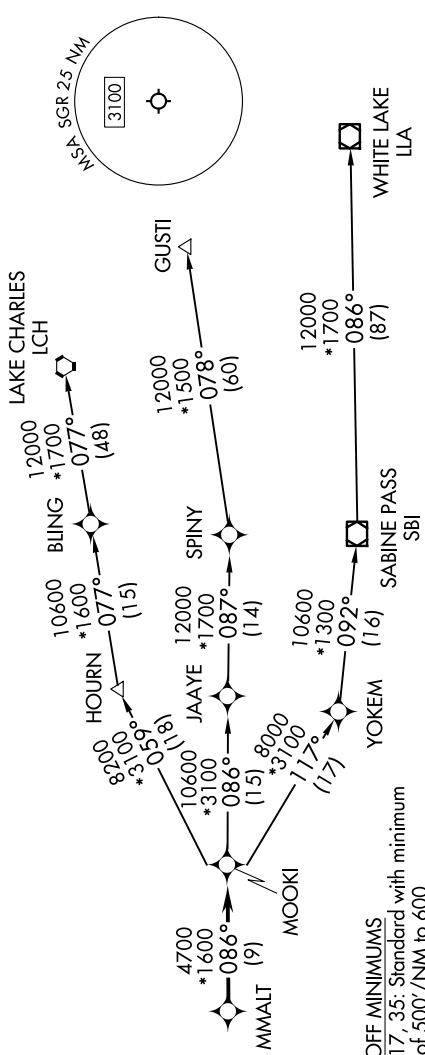
# MMALT SEVEN DEPARTURE (RNAV)

SC-5, 23 JAN 2025 to 20 FEB 2025

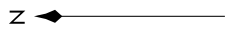
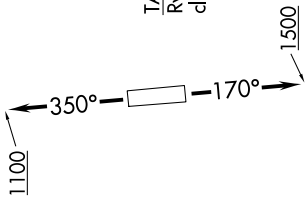
RNAV 1 - DME/DME/IRU or GPS.

RADAR required.

HOUSTON DEP CON  
123.8 257.7  
ATIS \*  
118.125  
CLNC DEL  
121.4  
CLNC DEL (When twr closed)  
119.25  
GND CON  
121.4  
SUGARLAND TOWER \*  
118.65 (CTAF)



TAKEOFF MINIMUMS  
Rwy 17, 35: Standard with minimum  
climb of 500'/NM to 600'.



TOP ALTITUDE:  
ASSIGNED BY ATC

## DEPARTURE ROUTE DESCRIPTION

TAKEOFF RUNWAY 17: Climb on heading 170° to 1500, for RADAR vectors to MMALT, thence. . . . .  
 TAKEOFF RUNWAY 35: Climb on heading 350° to 1100, for RADAR vectors to MMALT, thence. . . . .  
 . . . . on track 086° to MOOKI, then on (transition). Maintain ATC assigned altitude.  
 Expect filed altitude 10 minutes after departure.

- GUSTI TRANSITION (MMALT7.GUSTI)
- LAKE CHARLES TRANSITION (MMALT7.LCH)
- WHITE LAKE TRANSITION (MMALT7.ILA)

NOTE: GUSTI and LCH Transitions ATC assigned only for aircraft departing AXH, EFD, GLS, HPY, IWS, LBX, LVJ, SGR, TME, T00, T41 and 54T.

NOTE: Chart not to scale.

# MMALT SEVEN DEPARTURE (RNAV)

(MMALT7.MMALT) 30NOV23

HOUSTON, TEXAS

SUGAR LAND RGNL (SGR)

SC-5, 23 JAN 2025 to 20 FEB 2025