

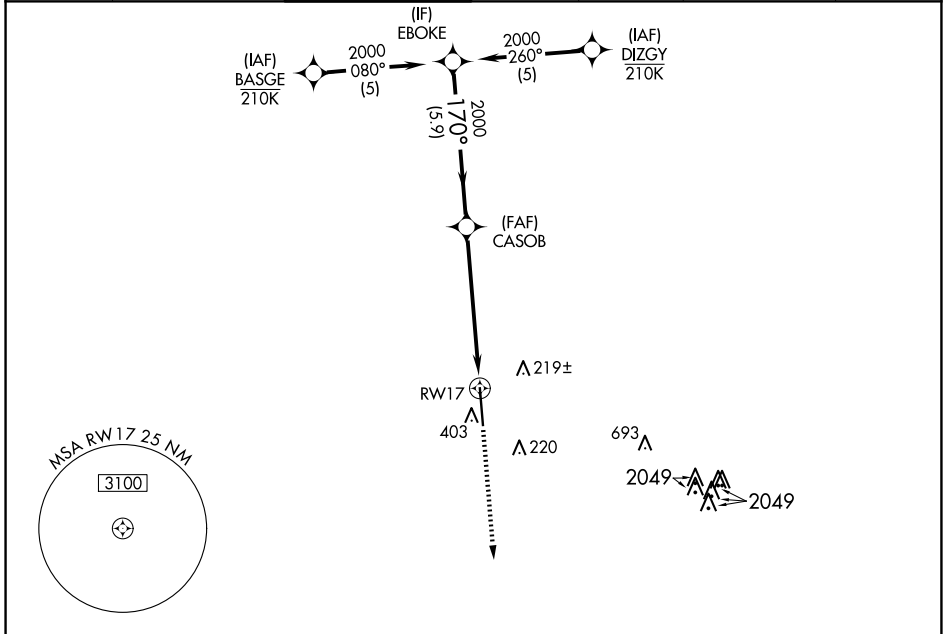
WAAS CH 82513 W17A	APP CRS 170°	Rwy Idg TDZE Apt Elev	7620 81 81
--	------------------------	-----------------------------	---------------------------------------

RNAV (GPS) RWY 17

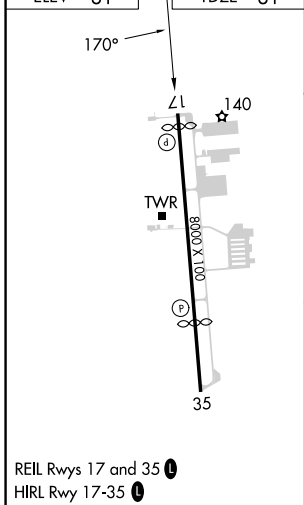
SUGAR LAND RGNL (SGR)

RNP APCH - GPS.	MISSED APPROACH: Climb to 2000 direct POPAM and hold.
<p>⚠ For uncompensated Baro-VNAV systems, LNAV/VNAV NA below -4°C or above 54°C. Rwy 17 helicopter visibility reduction below ¼ SM NA.</p>	

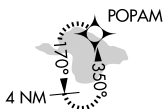
ATIS★ 118.125	HOUSTON APP CON 123.8 257.7	SUGAR LAND TOWER★ 118.65 (CTAF) 0	GND CON 121.4	CLNC DEL 121.4	CLNC DEL 119.25 (when twr closed)	UNICOM 122.95
-------------------------	---------------------------------------	---	-------------------------	--------------------------	--	-------------------------



ELEV 81	TDZE 81
---------	---------



REIL Rwy 17 and 35 **0**
HIRL Rwy 17-35 **0**



VGSI and RNAV glidepath not coincident (VGSI Angle 3.50/TCH 52).				2000	POPAM
EBOKE	CASOB	RWY 17		2000	POPAM
2000	2000	1.4 NM to RWY 17			
GP 3.00° TCH 54	5.9 NM	4.5 NM	1.4		
CATEGORY	A	B	C	D	
LPV DA	398-1 317 (400-1)				
LNAV/VNAV DA	704-2 623 (700-2)				
LNAV MDA	640-1	559 (600-1)	640-1½	559 (600-1½)	
C CIRCLING	720-1	639 (700-1)	720-1¾ 639 (700-1¾)	720-2 639 (700-2)	

SC-5, 23 JAN 2025 to 20 FEB 2025

SC-5, 23 JAN 2025 to 20 FEB 2025