

WYLSN EIGHT DEPARTURE (RNAV)

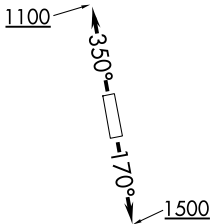
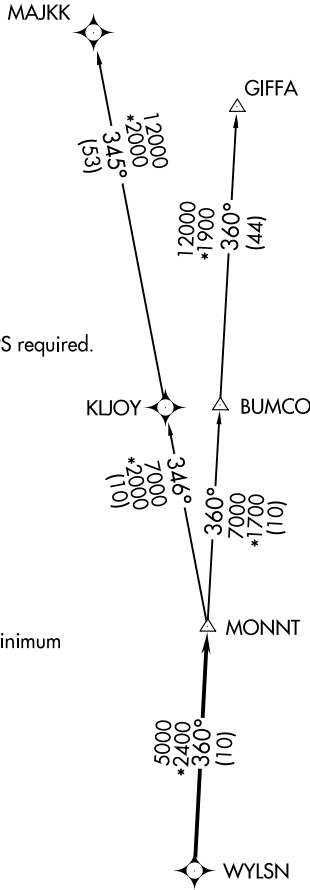
ATIS*
 118.125
 CLNC DEL
 121.4
 CLNC DEL
 119.25 (when twr closed)
 GND CON
 121.4
 SUGAR LAND TOWER*
 118.65 (CTAF)
 HOUSTON DEP CON
 123.8 257.7

**TOP ALTITUDE:
 ASSIGNED BY ATC**

NOTE: RADAR required.
 NOTE: DME/DME/IRU or GPS required.
 NOTE: RNAV 1.

TAKEOFF MINIMUMS

Rwy 17, 35: Standard with minimum
 climb of 500' per NM to 600.



DEPARTURE ROUTE DESCRIPTION

TAKEOFF RUNWAY 17: Climb on heading 170° to 1500 for RADAR vectors to WYLSN, thence. . . .

TAKEOFF RUNWAY 35: Climb on heading 350° to 1100 for RADAR vectors to WYLSN, thence. . . .

. . . .on track 360° to MONNT, then on (transition).
 Maintain ATC assigned altitude. Expect filed altitude 10 minutes after departure.

GIFFA TRANSITION (WYLSN8.GIFFA)

MAJKK TRANSITION (WYLSN8.MAJKK)

NOTE: Chart not to scale.

WYLSN EIGHT DEPARTURE (RNAV)