

VOR/DME EWO <b>113.95</b> Chan <b>86 (Y)</b>	APP CRS <b>037°</b>	Rwy Idg <b>5003</b> TDZE <b>655</b> Apt Elev <b>669</b>
--	------------------------	---

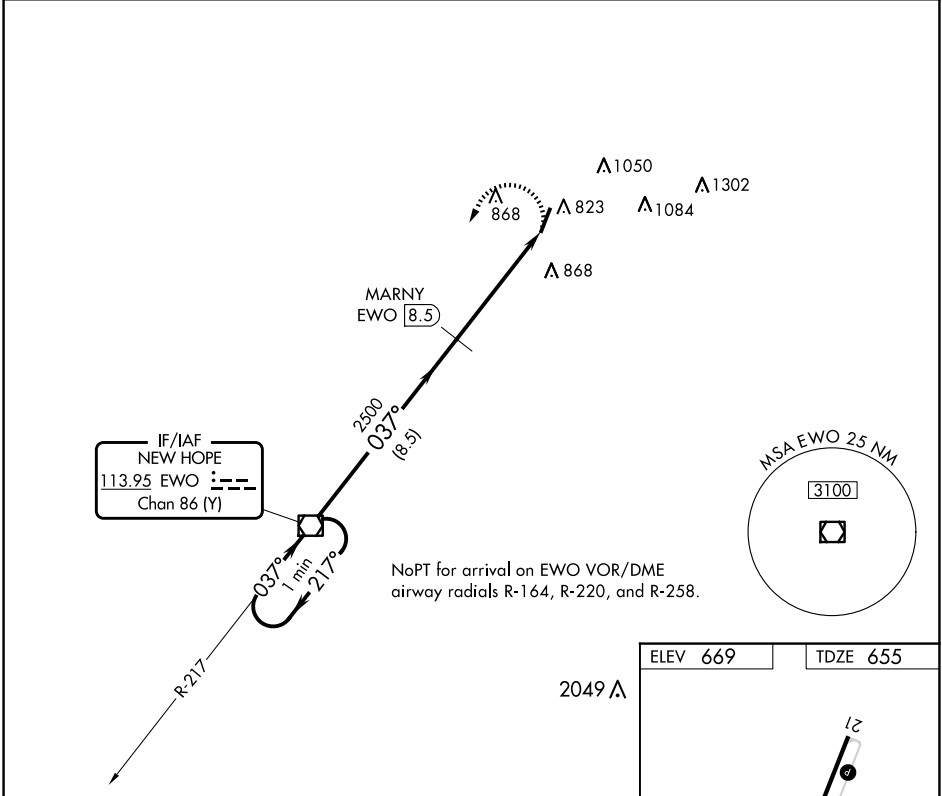
# VOR RWY 3

SAMUELS FLD (BRY)

Straight-in and Circling minimums NA at night.  
 Rwy 3 helicopter visibility reduction below 1 SM NA.  
 DME required.

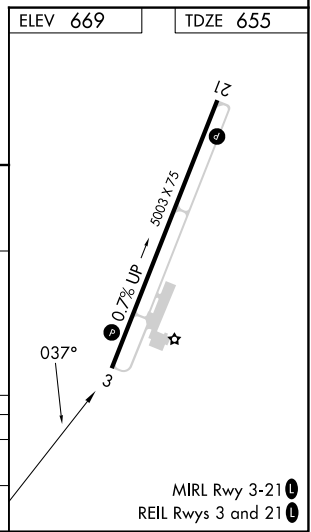
MISSED APPROACH: Climbing left turn to 2500 direct EWO VOR/DME and hold.

AWOS-3 <b>119.925</b>	LOUISVILLE APP CON <b>132.075 327.0</b>	UNICOM <b>122.8 (CTAF) 0</b>
--------------------------	--	---------------------------------



One Minute Holding Pattern

CATEGORY	A	B	C	D
S-3	1200-1	545 (600-1)	1200-1 $\frac{3}{4}$	545 (600-1 $\frac{1}{2}$ )
CIRCLING	1200-1 531 (600-1)	1280-1 611 (700-1)	1360-2 691 (700-2)	1480-2 $\frac{3}{4}$ 811 (900-2 $\frac{3}{4}$ )



SE-1, 23 JAN 2025 to 20 FEB 2025

SE-1, 23 JAN 2025 to 20 FEB 2025