

LOC I-RUQ 109.95	APP CRS 202°	Rwy Idg TDZE Apt Elev	5501 772 772
----------------------------	------------------------	-----------------------------	---

ILS or LOC RWY 20

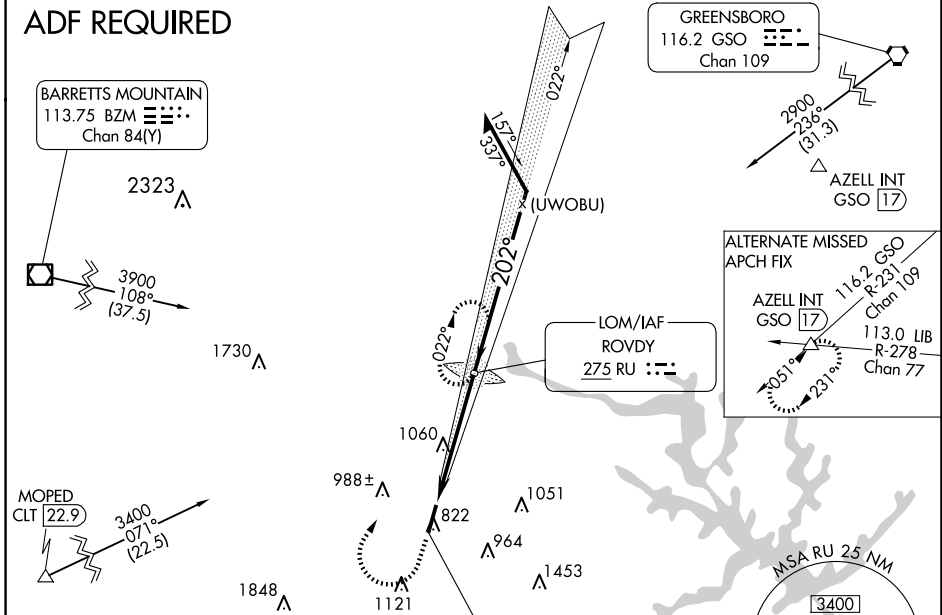
MID-CAROLINA RGNL (RUQ)

ADF REQUIRED. When local altimeter setting not received, use Lexington altimeter setting and increase all DA 37 feet and all MDA 40 feet; increase S-LOC Cats C/D visibility 1/8 SM and Circling Cat D visibility 1/4 SM. For inop ALS when using Lexington altimeter setting, increase S-LOC 20 Cats C and D visibility to 1 3/4 mile.

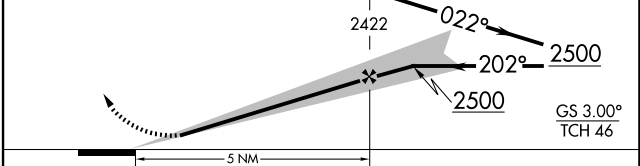
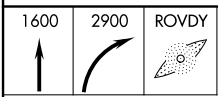
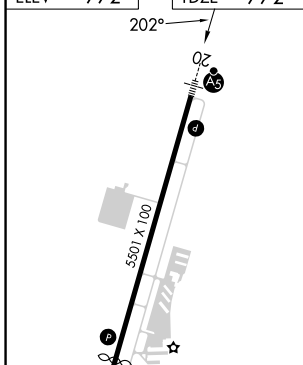
MALSR
 MISSED APPROACH: Climb to 1600 then climbing right turn to 2900 direct ROVDY LOM and hold.

AWOS-3 118.175	CHARLOTTE APP CON 128.325 307.8	CLNC DEL 127.35	UNICOM 122.725 (CTAF)
--------------------------	---	---------------------------	---------------------------------

ADF REQUIRED



ELEV 772	TDZE 772
----------	----------



CATEGORY	A	B	C	D
S-ILS 20	972-1/2		200 (200-1/2)	
S-LOC 20	1360-1/2 588 (600-1/2)		1360-1/4 588 (600-1/4)	
<input checked="" type="checkbox"/> CIRCLING	1360-1 588 (600-1)		1440-1 3/4 668 (700-1 3/4) 1440-2 668 (700-2)	

SE-2, 23 JAN 2025 to 20 FEB 2025

SE-2, 23 JAN 2025 to 20 FEB 2025