

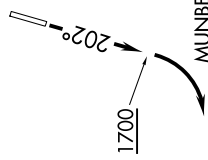
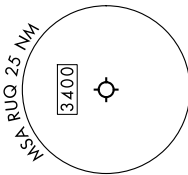
KILNS FIVE DEPARTURE (RNAV)

SE-2, 23 JAN 2025 to 20 FEB 2025

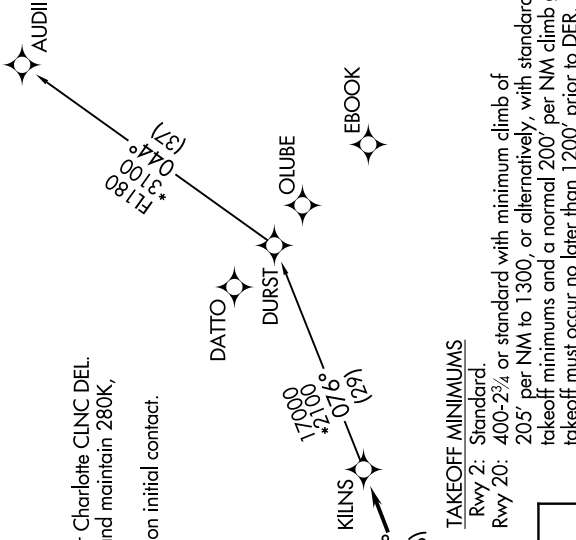
CHARLOTTE DEP CON
128.325 307.8
AWOS-3
118.175
CLNC DEL
127.35
UNICOM (CTAF)
122.725

RNAV 1 - DME/DME/IRU or GPS.
RADAR required.

- NOTE: For turbajets only.
- NOTE: Transponder code will be issued via PDC or Charlotte CLNC DEL.
- NOTE: Upon reaching 10000 MSL, accelerate to and maintain 280K, if unable advise ATC.
- NOTE: If unable to accept climb rates, advise ATC on initial contact.



TOP ALTITUDE:
3000



TAKEOFF MINIMUMS
Rwy 2: Standard.
Rwy 20: 400-2³/₄ or standard with minimum climb of 205' per NM to 1300, or alternatively, with standard takeoff minimums and a normal 200' per NM climb gradient, takeoff must occur no later than 1'200' prior to DER.

DEPARTURE ROUTE DESCRIPTION

TAKEOFF RUNWAY 2: Climb on heading assigned by ATC. Thence
TAKEOFF RUNWAY 20: Climb heading 202° to 1700 before turning right, then on heading assigned by ATC, thence
 on RADAR vectors to MUNBE, then on depicted route to KILNS, then on AUDII Transition. Maintain 3000. Expect clearance to filed altitude within 10 minutes after departure.

AUDII TRANSITION (KILNS5.AUDII)

NOTE: Chart not to scale.

KILNS FIVE DEPARTURE (RNAV)

SE-2, 23 JAN 2025 to 20 FEB 2025