

(WEAZL5.WEAZL) 24081

AL-5551 (FAA)

MID-CAROLINA RGNL (RUQ)
SALISBURY, NORTH CAROLINA

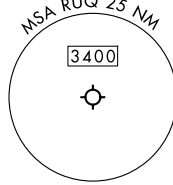
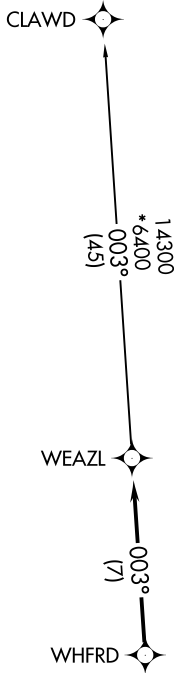
WEAZL FIVE DEPARTURE (RNAV)

RNAV 1 - DME/DME/IRU or GPS.

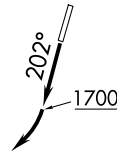
RADAR required.

**TOP ALTITUDE:
3000**

CHARLOTTE DEP CON
128.325 307.8
AWOS-3
118.175
CLNC DEL
127.35
UNICOM
122.725



- NOTE: For turbo jets only.
- NOTE: If unable to accept climb rates, advise ATC on initial contact.
- NOTE: Upon reaching 10000 MSL, accelerate to and maintain 280K, if unable advise ATC.



TAKEOFF MINIMUMS

Rwy 2: Standard.
 Rwy 20: 400-2³/₄ or standard with minimum climb of 205' per NM to 1300, or alternatively, with standard takeoff minimums and a normal 200' per NM climb gradient, takeoff must occur no later than 1200' prior to DER.

NOTE: Chart not to scale.



DEPARTURE ROUTE DESCRIPTION

TAKEOFF RUNWAY 2: Climb on heading assigned by ATC, thence

TAKEOFF RUNWAY 20: Climb on heading 202° to 1700 before turning right, then on heading assigned by ATC, thence

. . . . on RADAR vectors to WHFRD, then on track 003° to WEAZL, then on CLAWD Transition. Maintain 3000, expect clearance to filed altitude within 10 minutes after departure.

CLAWD TRANSITION (WEAZL5.CLAWD)

WEAZL FIVE DEPARTURE (RNAV)

(WEAZL5.WEAZL) 21MAR24

SALISBURY, NORTH CAROLINA
MID-CAROLINA RGNL (RUQ)

SE-2, 23 JAN 2025 to 20 FEB 2025

SE-2, 23 JAN 2025 to 20 FEB 2025