

WAAS CH <b>86324</b> <b>W01A</b>	APP CRS <b>007°</b>	Rwy Idg TDZE Apt Elev	<b>5001</b> <b>489</b> <b>489</b>
--	------------------------	-----------------------------	---

# RNAV (GPS) RWY 1

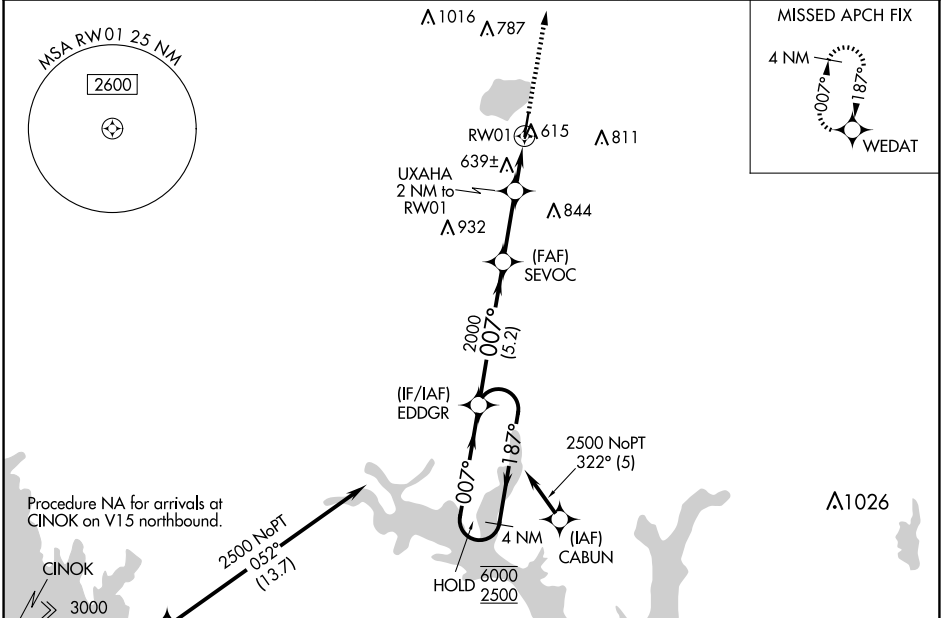
SULPHUR SPRINGS MUNI (SLR)

RNP APCH-GPS.

⚠ Circling NA east of Rwy 1-19. Rwy 1 helicopter visibility reduction below 3/4 SM NA.  
 ⚠ For uncompensated Baro-VNAV systems, LNAV/VNAV NA below -15°C or above 54°C.

MISSED APPROACH: Climb to 3000 direct WEDAT and hold.

AWOS-3 <b>118.35</b>	FORT WORTH CENTER <b>132.025 360.75</b>	UNICOM <b>123.075 (CTAF)</b>
-------------------------	--	---------------------------------



Procedure NA for arrivals at CINOK on V15 northbound.

CINOK 3000 086° (17.7) (IAF) BILYA

2500 NoPT 052° (13.7)

(IF/IAF) EDDGR 2000 007° (5.2)

(FAF) SEVOC 2000 007° (5.2)

UXAHA 2 NM to RWY 1

(IAF) CABUN 4 NM

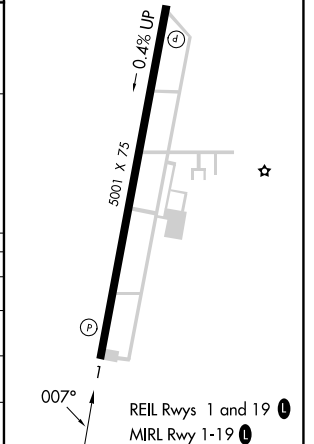
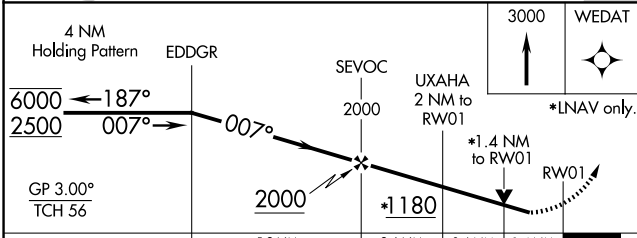
HOLD 6000/2500

2500 NoPT 322° (5)

(IAF) CABUN

A1026

ELEV 489	TDZE 489
----------	----------



CATEGORY	A	B	C	D
LPV DA	803-1	314 (400-1)		NA
LNAV/VNAV DA	975-1 5/8	486 (500-1 5/8)		NA
LNAV MDA	1000-1	511 (600-1)	1000-1 3/8 511 (600-1 3/8)	NA
CIRCLING	1000-1	511 (600-1)	1000-1 1/2 511 (600-1 1/2)	NA

SC-2, 23 JAN 2025 to 20 FEB 2025

SC-2, 23 JAN 2025 to 20 FEB 2025