

WAAS CH <b>90323</b> <b>W19A</b>	APP CRS <b>187°</b>	Rwy Idg TDZE <b>476</b> Apt Elev <b>489</b>	<b>5001</b> <b>476</b> <b>489</b>
--	------------------------	---	---

# RNAV (GPS) RWY 19

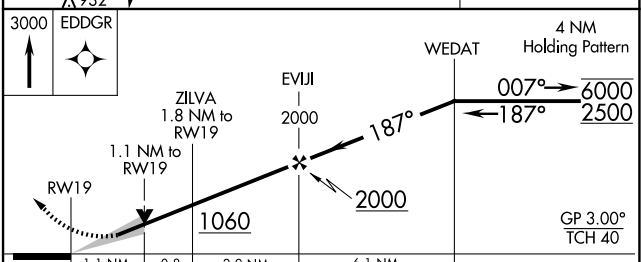
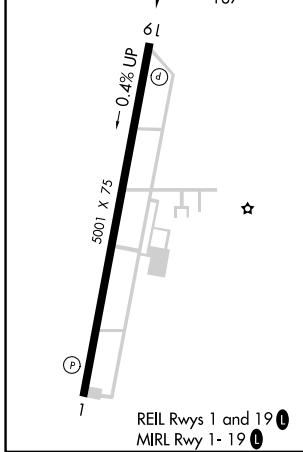
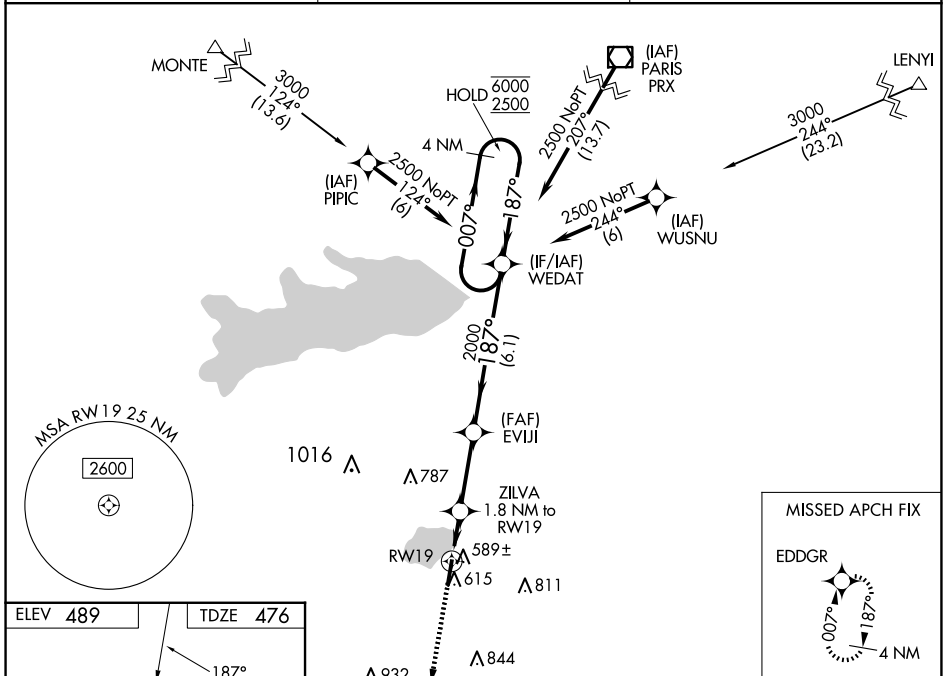
SULPHUR SPRINGS MUNI (SLR)

RNP APCH-GPS.

**▼** Circling NA east of Rwy 1-19. For uncompensated Baro-VNAV systems, LNAV/VNAV NA below -15°C or above 54°C.

**▲** MISSED APPROACH: Climb to 3000 direct EDDGR and hold.

AWOS-3 <b>118.35</b>	FORT WORTH CENTER <b>132.025 360.75</b>	UNICOM <b>123.075 (CTAF) 0</b>
-------------------------	--	-----------------------------------



CATEGORY	A	B	C	D
LPV DA		726-¾	250 (300-¾)	NA
LNAV/VNAV DA		776-1	300 (300-1)	NA
LNAV MDA		840-1	364 (400-1)	NA
<b>C</b> CIRCLING	940-1	451 (500-1)	1000-1½ 511 (600-1½)	NA

SC-2, 23 JAN 2025 to 20 FEB 2025

SC-2, 23 JAN 2025 to 20 FEB 2025