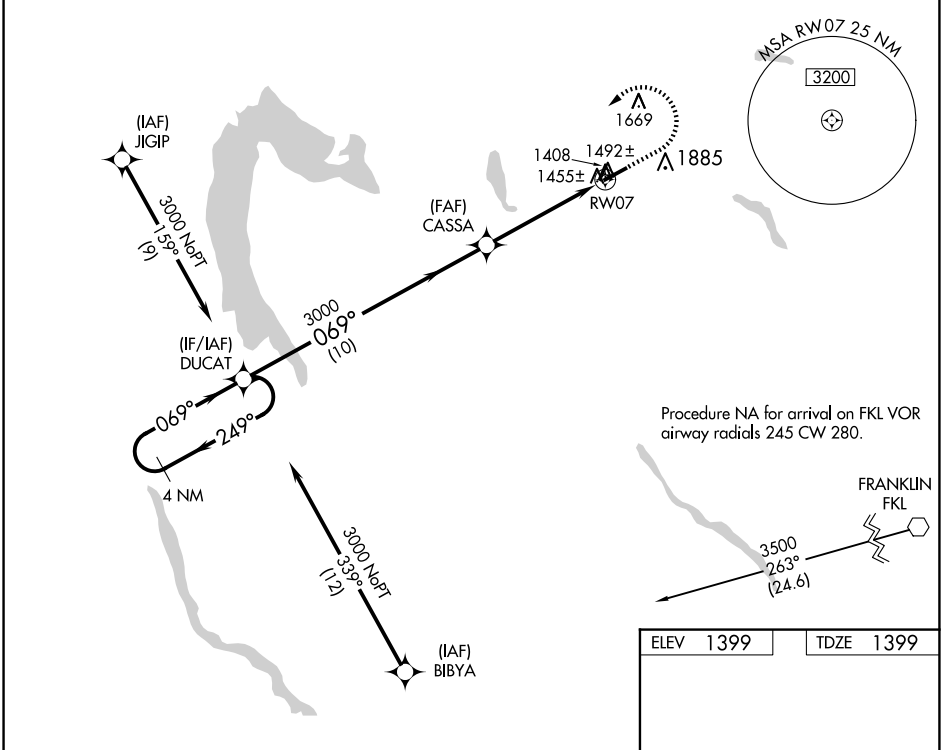


WAAS CH 53724 W07A	APP CRS 069°	Rwy Idg TDZE Apf Elev	5001 1399 1399
--	------------------------	-----------------------------	---

RNAV (GPS) RWY 7

PORT MEADVILLE (G.K.J)

RNP APCH.		MISSED APPROACH: Climb to 1900 then climbing left turn to 3100 direct DUCAT and hold.	
▼ ▲ Rwy 7 helicopter visibility reduction below 3/4 SM NA.		ASOS 121.425	YOUNGSTOWN APP CON * 133.95 322.3
		CLNC DEL 124.95	UNICOM 123.0 (CTAF) 0



NE-4, 23 JAN 2025 to 20 FEB 2025

NE-4, 23 JAN 2025 to 20 FEB 2025

ELEV 1399	TDZE 1399
-----------	-----------

