

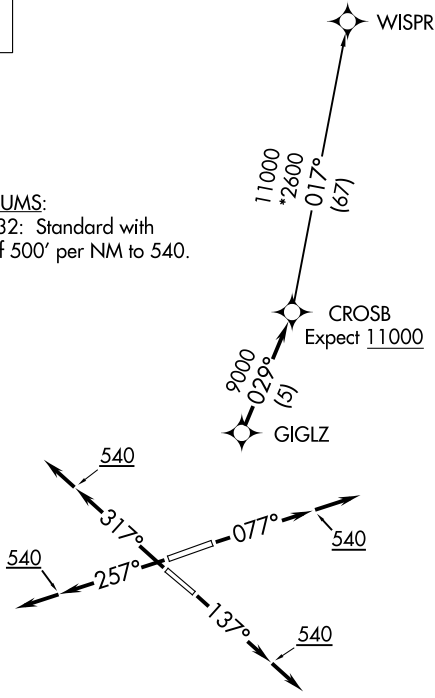
CROSB TWO DEPARTURE (RNAV)

TOP ALTITUDE:
3000

D-ATIS
125.85
CLNC DEL
119.5 290.275
CPDLC
GND CON
121.9 348.6
JACKSONVILLE TOWER
118.3 317.7
JACKSONVILLE DEP CON
127.0 292.15

TAKEOFF MINIMUMS:

Rwys 8, 14, 26, 32: Standard with minimum climb of 500' per NM to 540.



SE-3, 23 JAN 2025 to 20 FEB 2025

SE-3, 23 JAN 2025 to 20 FEB 2025

- NOTE: RNAV 1.
- NOTE: Turbojets only.
- NOTE: DME/DME/IRU or GPS required.
- NOTE: RADAR required.
- NOTE: If unable to accept climb rate, advise ATC on initial contact.

NOTE: Chart not to scale.

DEPARTURE ROUTE DESCRIPTION

TAKEOFF RUNWAY 8: Climb heading 077° to 540, then climb to assigned altitude on heading 077° or as assigned by ATC, Thence. . . .

TAKEOFF RUNWAY 14: Climb heading 137° to 540, then climb to assigned altitude on heading 137° or as assigned by ATC, Thence. . . .

TAKEOFF RUNWAY 26: Climb heading 257° to 540, then climb to assigned altitude on heading 257° or as assigned by ATC, Thence. . . .

TAKEOFF RUNWAY 32: Climb heading 317° to 540, then climb to assigned altitude on heading 317° or as assigned by ATC, Thence. . . .

. . . .expect radar vectors to GIGLZ, then on track 029° to CROSB. Maintain 3000 or as assigned by ATC, expect clearance to filed altitude within ten (10) minutes after departure.

WISPR TRANSITION (CROSB2.WISPR):