

HI-ILS Z or LOC Z RWY 26

LOC I-PEK 110.3	APCH CRS 257°	Rwy Idg 10,000 TDZE 27 Arpt Elev 30
---------------------------	-------------------------	--

[USAF]

JACKSONVILLE INTL (KJAX)

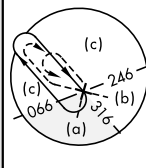
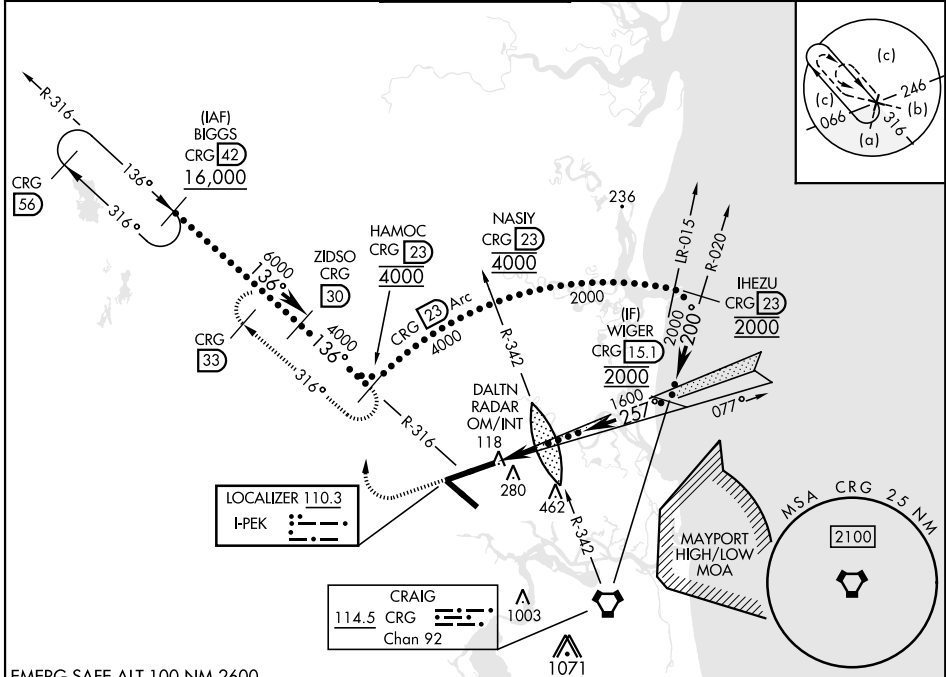
DME required. RADAR required for procedure entry.

- * When ALS inop, increase CAT E RVR to 40, vis to 3/8 mile.
- ** When ALS inop, increase vis to 1 3/8 miles.
- *** When ALS inop, increase RVR to 55, vis to 1 mile.



MISSED APPROACH: Climb to 1200 then climbing right turn to 4000 on heading 360° and CRG R-316 to HAMOC 23 DME and hold, continue climb-in-hold to 4000.

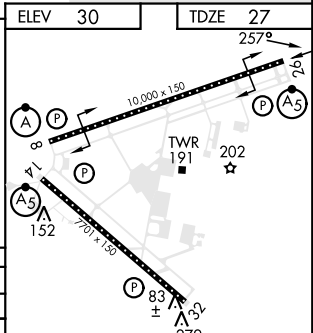
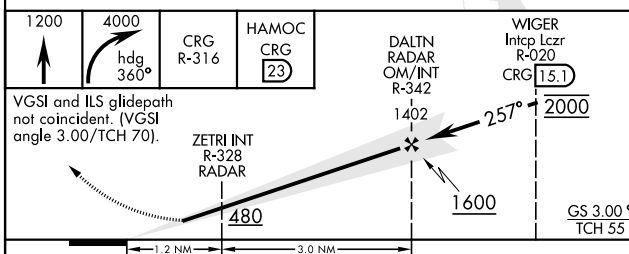
ATIS 125.85	APP CON 119.0 269.9	TOWER 118.3 317.7	GND CON 121.9 348.6	CLNC DEL 119.5 290.275
-----------------------	-------------------------------	-----------------------------	-------------------------------	----------------------------------



SE-3, 23 JAN 2025 to 20 FEB 2025

SE-3, 23 JAN 2025 to 20 FEB 2025

EMERG SAFE ALT 100 NM 2600



CATEGORY	C	D	E
S-ILS 26*	227/18	200 (200-1/2)	
S-LOC 26**	480/45	453 (500-7/8)	
CIRCLING	580-1 1/2	580-2	760-2 1/2
	550 (600-1 1/2)	550 (600-2)	730 (800-2 1/2)
ZETRI FIX MINIMUMS (DUAL VOR RECEIVERS REQUIRED)			
S-LOC 26***	400/35	373 (400-5/8)	
CIRCLING	580-1 1/2	580-2	760-2 1/2
	550 (600-1 1/2)	550 (600-2)	730 (800-2 1/2)

REIL Rwy 32				
HIRL Rwy 8-26, 14-32				
TDZL/CL Rwy 8-26, 14				
FAF to MAP 4.2 NM				
Knots	120	140	160	180
Min:Sec	2:06	1:48	1:35	1:24
			1:16	

HI-ILS Z or LOC Z RWY 26