

LOC I-CZH <b>110.5</b>	APP CRS <b>137°</b>	Rwy ldg <b>7701</b>
		TDZE <b>27</b>
		Apt Elev <b>30</b>

# ILS Y or LOC Y RWY 14

JACKSONVILLE INTL (JAX)

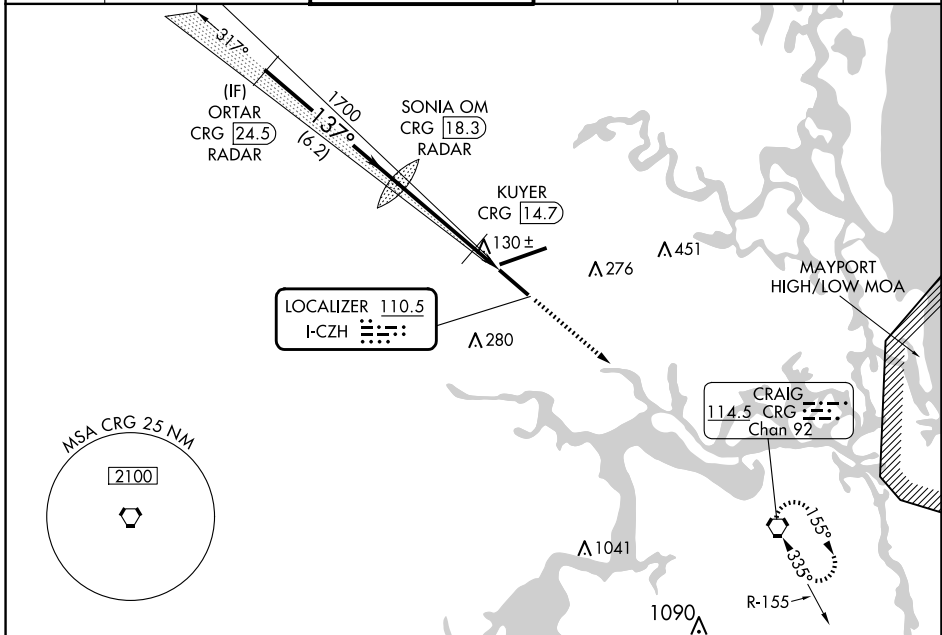
RADAR required for procedure entry, DME or RADAR required.

Autopilot coupled approach NA below 750 feet MSL. Rwy 14 helicopter visibility reduction below 3/4 SM NA. For inop ALS increase S-ILS 14 visibility all Cats to 3/8 SM, and increase S-LOC 14 Cats A and B visibility and KUYER Fix minimums S-LOC 14 visibility all Cats to 1 SM.

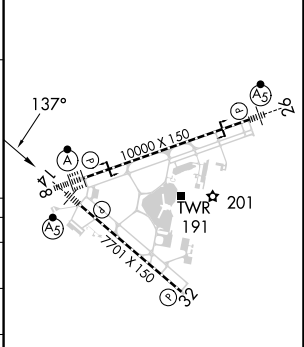
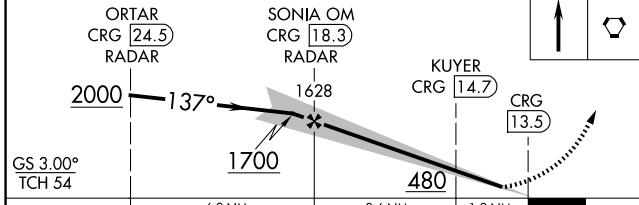


MISSED APPROACH:  
Climb to 3000 direct  
CRG VORTAC and hold.

D-ATIS <b>125.85</b>	JACKSONVILLE APP CON <b>119.0 269.9</b>	JACKSONVILLE TOWER <b>118.3 317.7</b>	GND CON <b>121.9 348.6</b>	CLNC DEL <b>119.5 290.275</b>	CPDLC
-------------------------	--	--	-------------------------------	----------------------------------	-------



VGSI and ILS glidepath not coincident (VGSI Angle 3.00/TCH 70).	3000	CRG	ELEV 30	TDZE 27
---	------	-----	---------	---------



CATEGORY	A	B	C	D
S-ILS 14	306-3/4 279 (300-3/4)			
S-LOC 14	480-3/4 453 (500-3/4)		480-7/8 453 (500-7/8)	
CIRCLING	520-1 490 (500-1)		580-1 1/2 550 (600-1 1/2)	580-2 550 (600-2)
KUYER FIX MINIMUMS (DME REQUIRED)				
S-LOC 14	380-3/4 353 (400-3/4)			
CIRCLING	520-1 490 (500-1)		580-1 1/2 550 (600-1 1/2)	580-2 550 (600-2)

REIL Rwy 32	TDZ/CL Rwys 8, 14, and 26				
	HIRL Rwys 8-26 and 14-32				
FAF to MAP 4.8 NM					
Knots	60	90	120	150	180
Min:Sec	4:48	3:12	2:24	1:55	1:36

SE-3, 23 JAN 2025 to 20 FEB 2025

SE-3, 23 JAN 2025 to 20 FEB 2025