

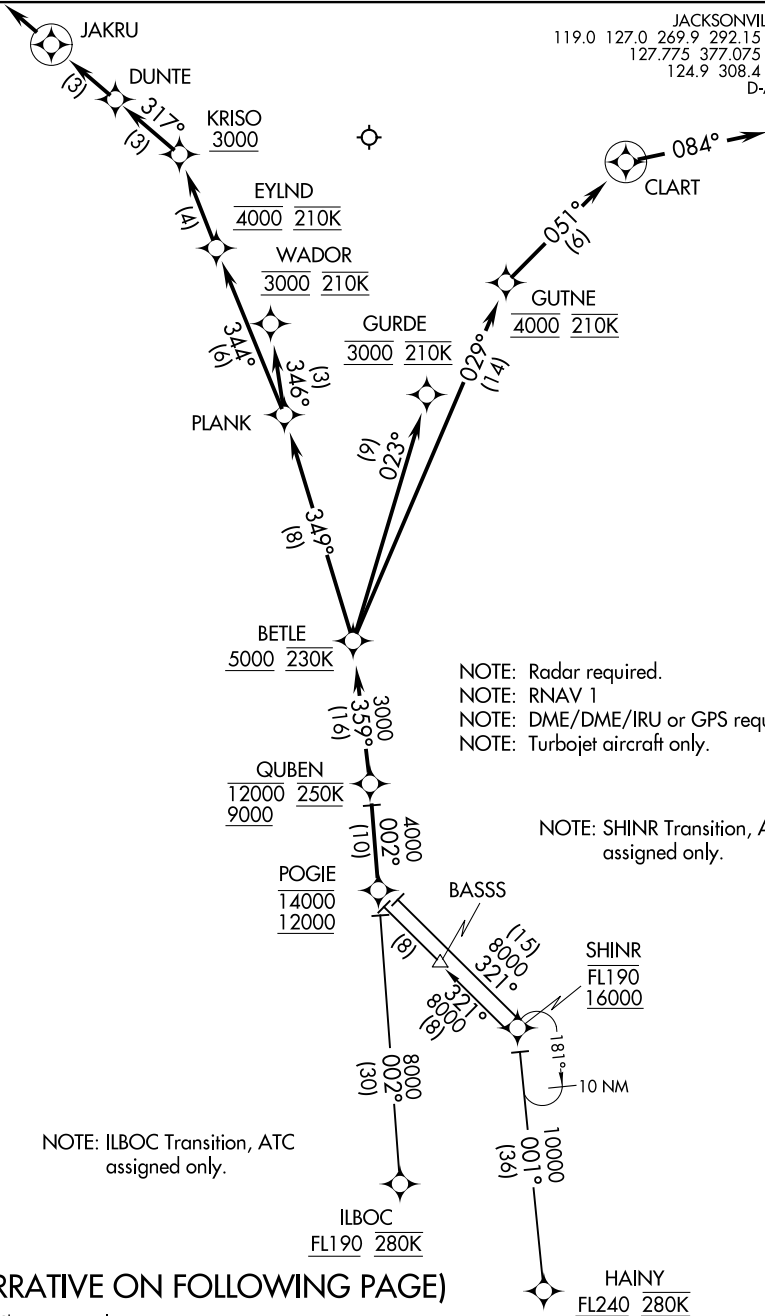
(QUBEN.QUBEN1) 18088

AL-5570 (FAA)

JACKSONVILLE INTL (JAX)
JACKSONVILLE, FLORIDA

QUBEN ONE ARRIVAL (RNAV)

JACKSONVILLE APP CON
119.0 127.0 269.9 292.15 (270°-090°)
127.775 377.075 (181°-269°)
124.9 308.4 (091°-180°)
D-ATIS 125.85



NOTE: Radar required.
NOTE: RNAV 1
NOTE: DME/DME/IRU or GPS required.
NOTE: Turbojet aircraft only.

NOTE: SHINR Transition, ATC assigned only.

NOTE: ILBOC Transition, ATC assigned only.

(NARRATIVE ON FOLLOWING PAGE)

NOTE: Chart not to scale.

SE-3, 23 JAN 2025 to 20 FEB 2025

SE-3, 23 JAN 2025 to 20 FEB 2025

QUBEN ONE ARRIVAL (RNAV)

(QUBEN.QUBEN1) 17OCT13

JACKSONVILLE, FLORIDA
JACKSONVILLE INTL (JAX)

QUBEN ONE ARRIVAL (RNAV)

ARRIVAL ROUTE DESCRIPTION

HAINY TRANSITION (HAINY.QUBEN1)

ILBOC TRANSITION (ILBOC.QUBEN1)

SHINR TRANSITION (SHINR.QUBEN1)

From POGIE on track 002° to cross QUBEN between 9000 and 12000 and at 250K.

LANDING RWY 8: From QUBEN on track 359° to cross BETLE at or above 5000 and at 230K, then on track 349° to PLANK, then on track 346° to cross WADOR at 3000 and at 210K. Expect radar vectors to RNAV (RNP)/Visual approach as assigned by ATC.

LANDING RWY 14: From QUBEN on track 359° to cross BETLE at or above 5000 and at 230K, then on track 349° to PLANK, then on track 344° to cross EYLND at 4000 and at 210K, then on track 344° to cross KRISO at or above 3000, then on track 317° to DUNTE, then on track 317° to JAKRU, then on 317° track. Expect radar vectors to final approach course.

LANDING RWY 26: From QUBEN on track 359° to cross BETLE at or above 5000 and at 230K, then on track 029° to cross GUTNE at 4000 and at 210K, then on track 051° to CLART, then on 084° track. Expect radar vectors to final approach course.

LANDING RWY 32: From QUBEN on track 359° to cross BETLE at or above 5000 and at 230K, then on track 023° to cross GURDE at 3000 and at 210K. Expect radar vectors to RNAV (RNP)/Visual approach as assigned by ATC.

SE-3, 23 JAN 2025 to 20 FEB 2025

SE-3, 23 JAN 2025 to 20 FEB 2025