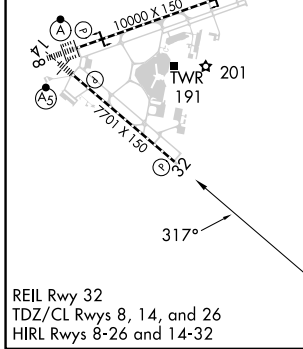
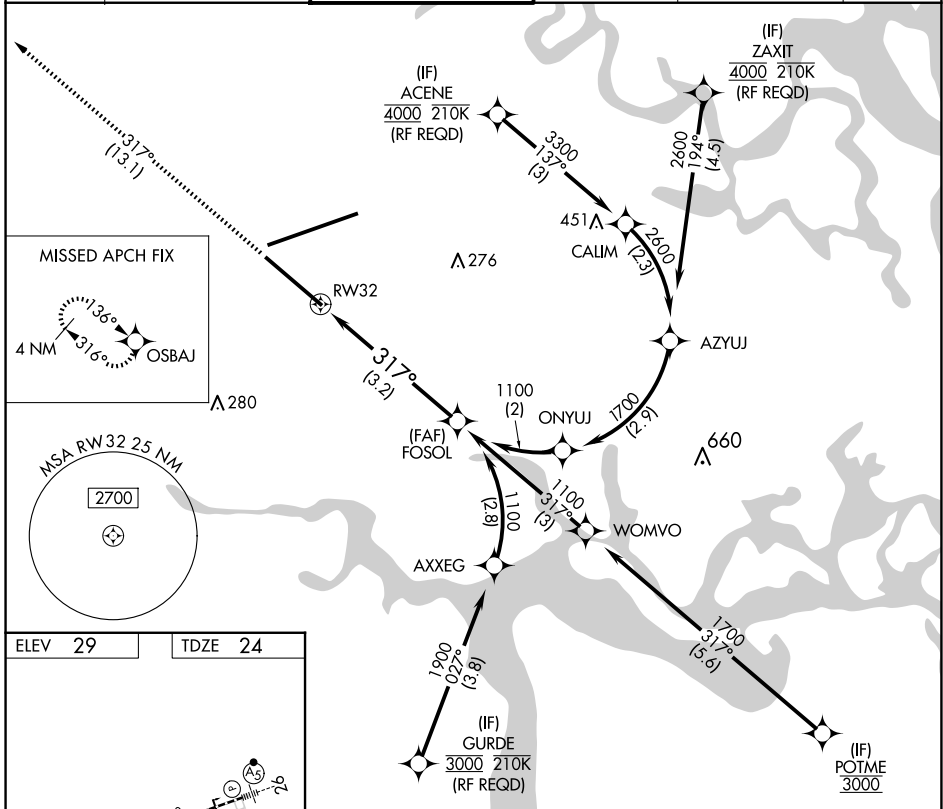


APP CRS	Rwy Idg	<b>7701</b>
<b>317°</b>	TDZE	<b>24</b>
	Apt Elev	<b>29</b>

# RNAV (RNP) Y RWY 32

JACKSONVILLE INTL (JAX)

<p><b>▼</b> For uncompensated Baro-VNAV systems, procedure NA below -5°C (23°F) or above 54°C (130°F). GPS required.</p>		<p>MISSED APPROACH: Climb to 2000 on track 317° to OSBAJ and hold.</p>			
D-ATIS	JACKSONVILLE APP CON	JACKSONVILLE TOWER	GND CON	CLNC DEL	CPDLC
<b>125.85</b>	<b>119.0 269.9</b>	<b>118.3 317.7</b>	<b>121.9 348.6</b>	<b>119.5 290.275</b>	



ELEV 29	TDZE 24	<p>2000 OSBAJ VGSi and RNAV glidepath not coincident (VGSi Angle 3.00/TCH 67).</p>		FOSOL 1100
<p>tr 317°</p>		<p>RW32</p>		1100
<p>See planview for multiple IF locations.</p>				
<p>3.2 NM</p>				
GP 3.00° TCH 50				
CATEGORY	A	B	C	D
RNP 0.11 DA		359-1½	334 (400-1½)	
RNP 0.30 DA		423-1½	399 (400-1½)	

**AUTHORIZATION REQUIRED**

SE-3, 23 JAN 2025 to 20 FEB 2025

SE-3, 23 JAN 2025 to 20 FEB 2025