

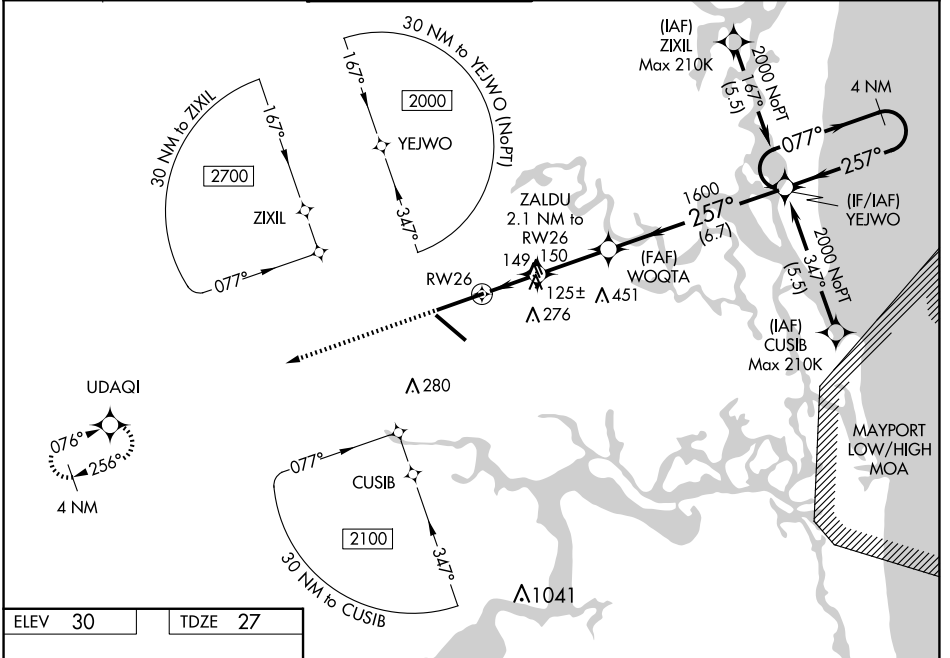
WAAS CH 97626 W26A	APP CRS 257°	Rwy Idg 10000 TDZE 27 Apt Elev 30
--	------------------------	--

RNAV (GPS) Z RWY 26

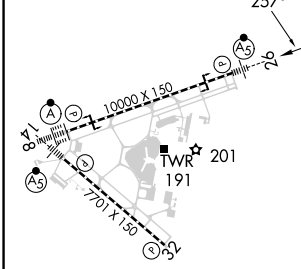
JACKSONVILLE INTL (JAX)

RNP APCH-GPS. ▼ For uncompensated Baro-VNAV systems, LNAV/VNAV NA below -5°C or above 54°C. For inoperative MALSR, increase LNAV/VNAV all Cats visibility to RVR 4500 and increase LNAV Cats C/D visibility to RVR 5500.	MALSR 	MISSED APPROACH: Climb to 2000 direct UDAQI and hold.
---	-----------	---

D-ATIS 125.85	JACKSONVILLE APP CON 119.0 269.9	JACKSONVILLE TOWER 118.3 317.7	GND CON 121.9 348.6	CLNC DEL 119.5 290.275	CPDLC
-------------------------	--	--	-------------------------------	----------------------------------	-------



ELEV 30	TDZE 27
---------	---------



2000	UDAQI	VGSI and RNAV glidepath not coincident (VGSI Angle 3.00/TCH 70).	4 NM Holding Pattern
		ZALDU 2.1 NM to RW26	YEJWO
		WQGTA 1.600	
		1 NM to RW26	
		RW26	
		740	
		1600	
		257°	
		077°	
		2000	
		GP 3.00°	
		TCH 49	
		1 NM	
		1.1 NM	
		2.7 NM	
		6.7 NM	

CATEGORY	A	B	C	D
LPV DA		227/18	200 (200-½)	
LNAV/VNAV DA		300/24	273 (300-½)	
LNAV MDA	400/24	373 (400-½)	400/35	373 (400-¾)
CIRCLING	520-1	490 (500-1)	580-1½ 550 (600-1½)	640-2 610 (700-2)

REIL Rwy 32
TDZ/CL Rwys 8, 14, and 26
HIRL Rwys 8-26 and 14-32

SE-3, 23 JAN 2025 to 20 FEB 2025

SE-3, 23 JAN 2025 to 20 FEB 2025