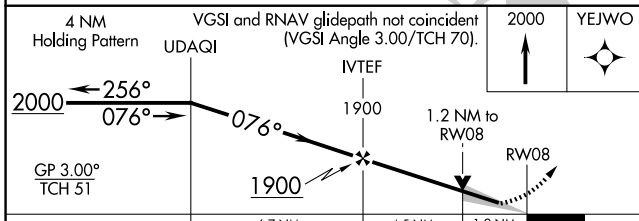
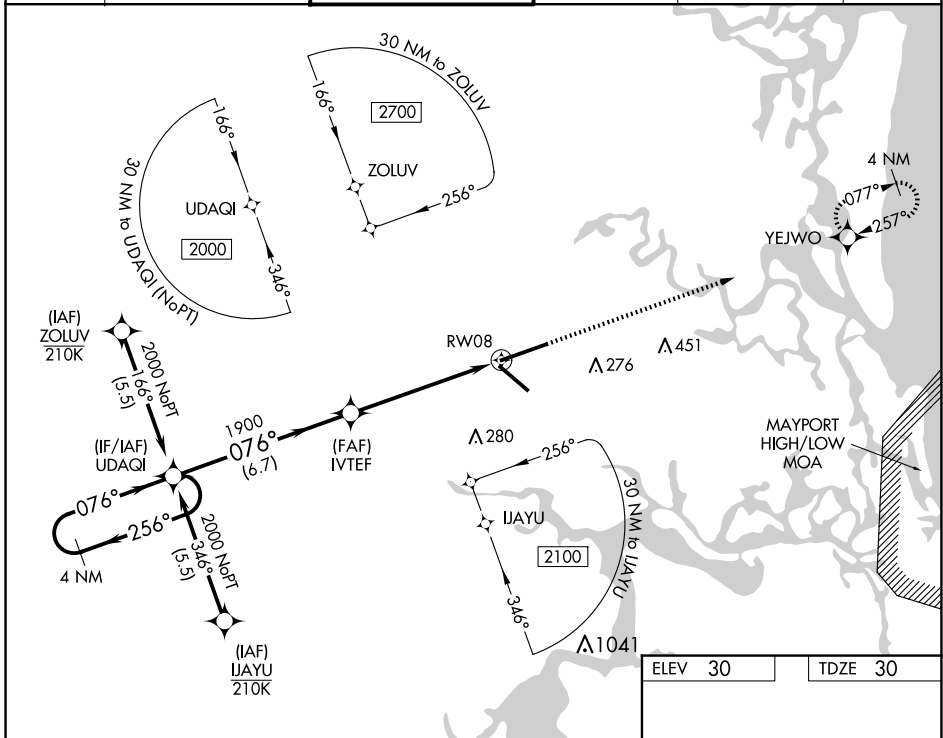


WAAS CH <b>50526</b> <b>W08A</b>	APP CRS <b>076°</b>	Rwy Idg <b>10000</b> TDZE <b>30</b> Apt Elev <b>30</b>
--	------------------------	--

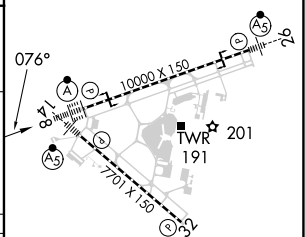
# RNAV (GPS) Z RWY 8

JACKSONVILLE INTL (JAX)

RNP APCH-GPS.		ALSF-2		MISSED APPROACH: Climb to 2000 direct YEJWO and hold.	
▼ For uncompensated Baro-VNAV systems, LNAV/VNAV NA below -5°C or above 54°C.					
D-ATIS <b>125.85</b>	JACKSONVILLE APP CON <b>119.0 269.9</b>	JACKSONVILLE TOWER <b>118.3 317.7</b>	GND CON <b>121.9 348.6</b>	CLNC DEL <b>119.5 290.275</b>	CPDLC



ELEV 30	TDZE 30
---------	---------



CATEGORY	A	B	C	D
LPV DA	230/18		200 (200-½)	
LNAV/VNAV DA	364/32		334 (400-⅙)	
LNAV MDA	480/24	450 (500-½)	480/45	450 (500-⅔)
CIRCLING	520-1	490 (500-1)	580-1½ 550 (600-1½)	580-2 550 (600-2)

REIL Rwy 32  
TDZ/CL Rwys 8, 14, and 26  
HIRL Rwys 8-26 and 14-32

SE-3, 23 JAN 2025 to 20 FEB 2025

SE-3, 23 JAN 2025 to 20 FEB 2025