

SAWGY THREE DEPARTURE

TOP ALTITUDE:
3000

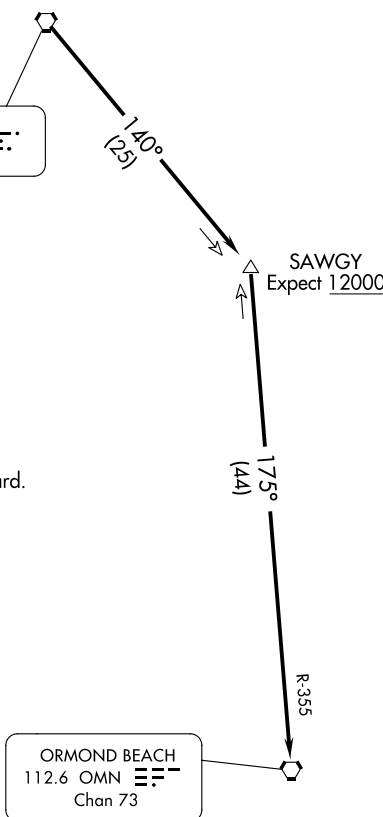
RADAR required.

D-ATIS 125.85
CLNC DEL 119.5 290.275
CPDLC 121.9 348.6
GND CON 118.3 317.7
JACKSONVILLE TOWER 124.9 308.4
JACKSONVILLE DEP CON 124.9 308.4

DINNS
344 JA :---

CRAIG
114.5 CRG ---

Chan 92



TAKEOFF MINIMUMS
Rwys 8, 14, 26, 32: Standard.

NOTE: Chart not to scale.

DEPARTURE ROUTE DESCRIPTION

TAKEOFF ALL RUNWAYS: Climb on assigned heading for RADAR vectors to join CRG R-140 to SAWGY INT, then on OMN R-355 to OMN VORTAC, thence

. . . .on RADAR vectors to appropriate route. Maintain 3000, expect filed altitude 10 minutes after departure.

SAWGY THREE DEPARTURE