

WAAS CH 45540 W34A	APP CRS 334°	Rwy Idg TDZE 20 Apt Elev 20	4477
--	------------------------	---	-------------

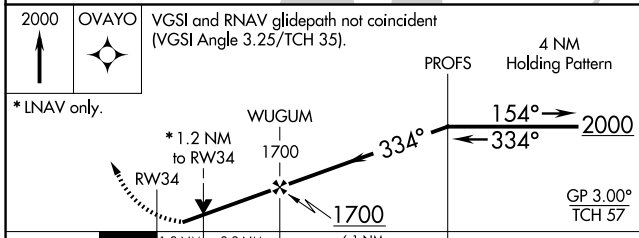
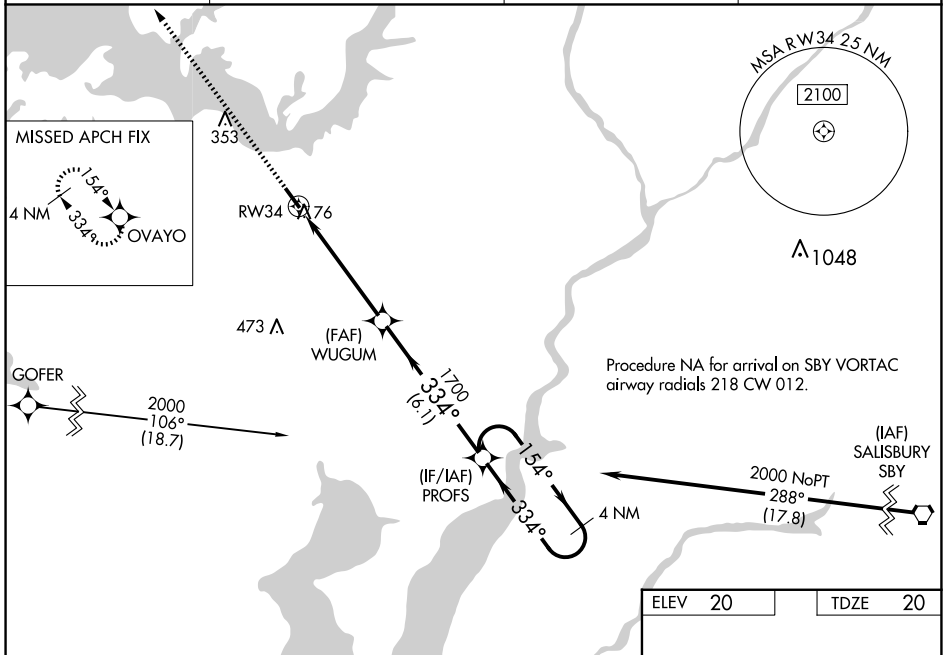
RNAV (GPS) RWY 34

CAMBRIDGE-DORCHESTER RGNL (CGE)

⚠ Circling NA at night. For uncompensated Baro-VNAV systems, LNAV/VNAV NA below -15°C (5°F) or above 54°C (130°F). Rwy 34 helicopter visibility reduction below ¾ SM NA. DME/DME RNP-0.3 NA.

MISSED APPROACH: Climb to 2000 direct OVAYO and hold.

AWOS-3 120.675	PATXENT APP CON ★ 121.0 250.3	UNICOM 122.7 (CTAF)	121.9 ⓪
--------------------------	---	-------------------------------	-----------------------



ELEV 20	TDZE 20
---------	---------

MIRL Rwy 16-34 **⓪**
REIL Rws 16 and 34 **⓪**

CATEGORY	A	B	C	D
LPV DA		286- ⁷ / ₈	266 (300- ⁷ / ₈)	
LNAV/VNAV DA		309- ⁷ / ₈	289 (300- ⁷ / ₈)	
LNAV MDA	480-1 460 (500-1)		480-1 ³ / ₈ 460 (500-1 ³ / ₈)	
⓪ CIRCLING	480-1 460 (500-1)		660-1 ³ / ₄ 640 (700-1 ³ / ₄)	780-2 ¹ / ₂ 760 (800-2 ¹ / ₂)

NE-3, 23 JAN 2025 to 20 FEB 2025

NE-3, 23 JAN 2025 to 20 FEB 2025