

| | | | |
|--|------------------------|-----------------------------|---|
| WAAS CH 56627 W19A | APP CRS 187° | Rwy Idg TDZE Apt Elev | 6502 130 130 |
|--|------------------------|-----------------------------|---|

RNAV (GPS) RWY 19

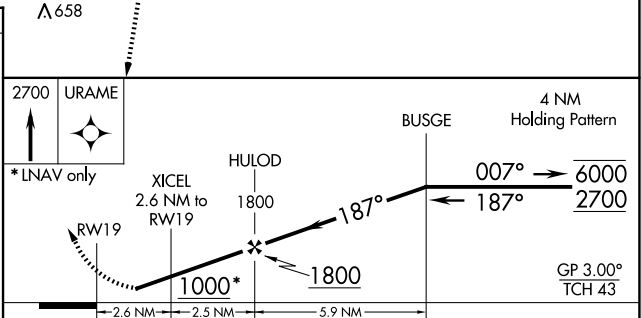
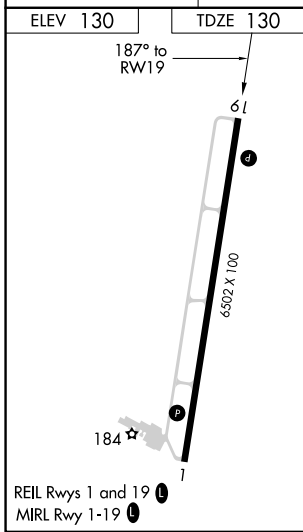
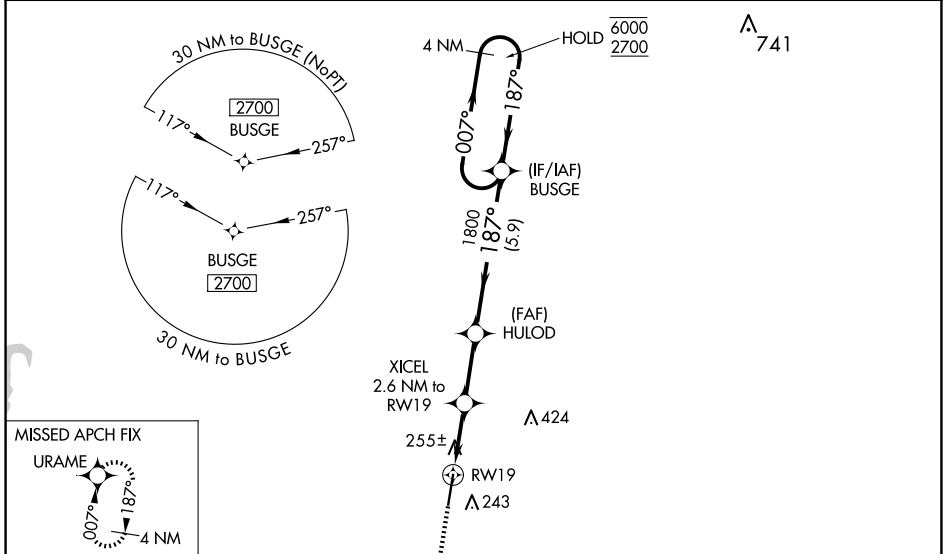
HARRELL FLD (CDH)

RNP APCH-GPS.

⚠ Rwy 19 helicopter visibility reduction below 3/4 SM NA. Baro-VNAV NA when using El Dorado altimeter setting. For uncompensated Baro-VNAV systems, LNAV/VNAV NA below -15°C or above 54°C. When local altimeter setting not received, use El Dorado altimeter setting and LPV DA to 517 feet, LNAV/VNAV DA to 503 feet and all MDA 80 feet; increase LPV all Cats visibility 1/8 SM, and LNAV Cats C and D, and Circling Cat D 1/4 SM.

MISSED APPROACH: Climb to 2700 direct URAM and hold.

| | | |
|------------------------|---|---------------------------------|
| AWOS-3 125.2 | FORT WORTH CENTER 128.2 269.1 | UNICOM 122.7 (CTAF) 0 |
|------------------------|---|---------------------------------|



| CATEGORY | A | B | C | D |
|--------------|----------------------|----------------------|------------------------------|------------------------------|
| LPV DA | | 440-1 | 310 (400-1) | |
| LNAV/VNAV DA | | 426-1 | 296 (300-1) | |
| LNAV MDA | 520-1 | 390 (400-1) | 520-1 1/8 | 390 (400-1 1/8) |
| CIRCLING | 560-1 430 (500-1) | 580-1 450 (500-1) | 580-1 1/2 450 (500-1 1/2) | 960-2 3/4 830 (900-2 3/4) |

SC-1, 23 JAN 2025 to 20 FEB 2025

SC-1, 23 JAN 2025 to 20 FEB 2025