

LOC/DME I-CXO <b>108.7</b> Chan <b>24</b>	APP CRS <b>140°</b>	Rwy Idg <b>7501</b> TDZE <b>236</b> Apt Elev <b>245</b>
---	------------------------	---

# ILS or LOC RWY 14

CONROE/NORTH HOUSTON RGNL (CXO)

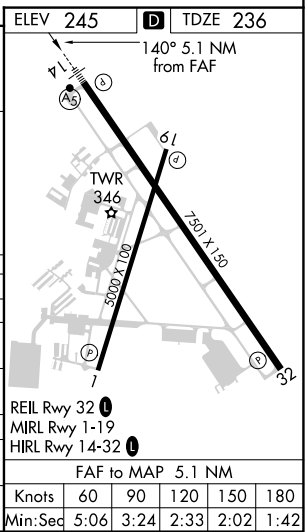
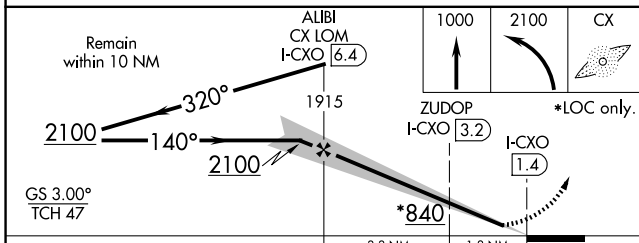
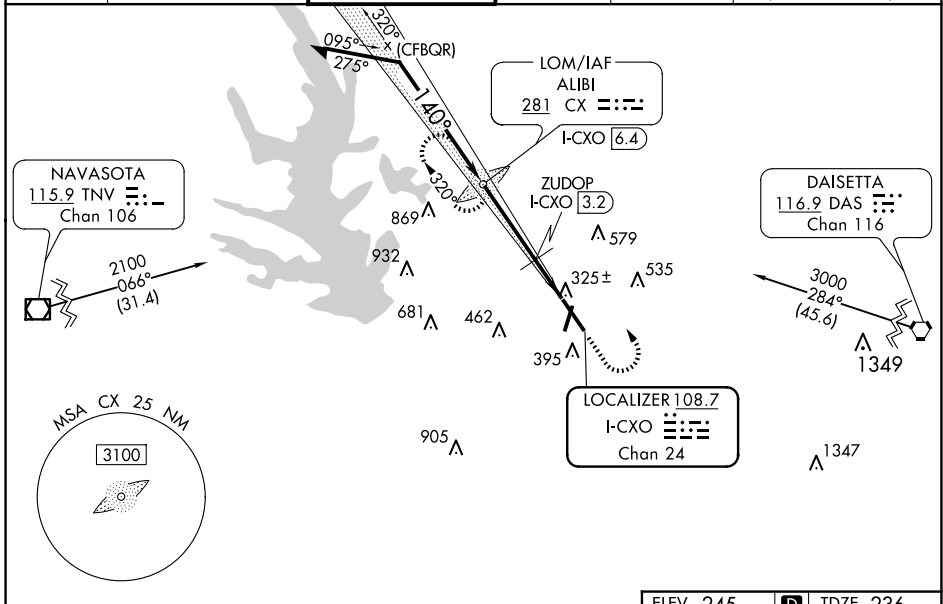
ADF required.

▼  
▲ NA

MALSR  
AS

MISSED APPROACH: Climb to 1000 then climbing left turn to 2100 direct ALIBI LOM/I-CXO 6.4 DME and hold.

ATIS <b>118.325</b>	HOUSTON APP CON <b>119.7 281.4</b>	CONROE TOWER ★ <b>124.125</b> (CTAF) <b>0</b>	GND CON <b>120.45</b>	CLNC DEL <b>120.45</b>	CLNC DEL <b>119.55</b> (When twr closed)
------------------------	---------------------------------------	--	--------------------------	---------------------------	--



CATEGORY	A	B	C	D
S-ILS 14		436-1/2	200 (200-1/2)	
S-LOC 14	840-1/2	604 (600-1/2)	840-1 3/8	604 (600-1 3/8)
CIRCLING	840-1	595 (600-1)	880-1 3/4 635 (700-1 3/4)	960-2 1/4 715 (800-2 1/4)
ZUDOP FIX MINIMUMS				
S-LOC 14	640-1/2	404 (400-1/2)	640-3/4	404 (400-3/4)
CIRCLING	700-1	455 (500-1)	880-1 3/4 635 (700-1 3/4)	960-2 1/4 715 (800-2 1/4)

SC-5, 23 JAN 2025 to 20 FEB 2025

SC-5, 23 JAN 2025 to 20 FEB 2025