

WAAS CH <b>99316</b> <b>W08A</b>	APP CRS <b>077°</b>	Rwy Idg TDZE Apt Elev	<b>5205</b> <b>2585</b> <b>2591</b>
--	------------------------	-----------------------------	---

# RNAV (GPS) RWY 8

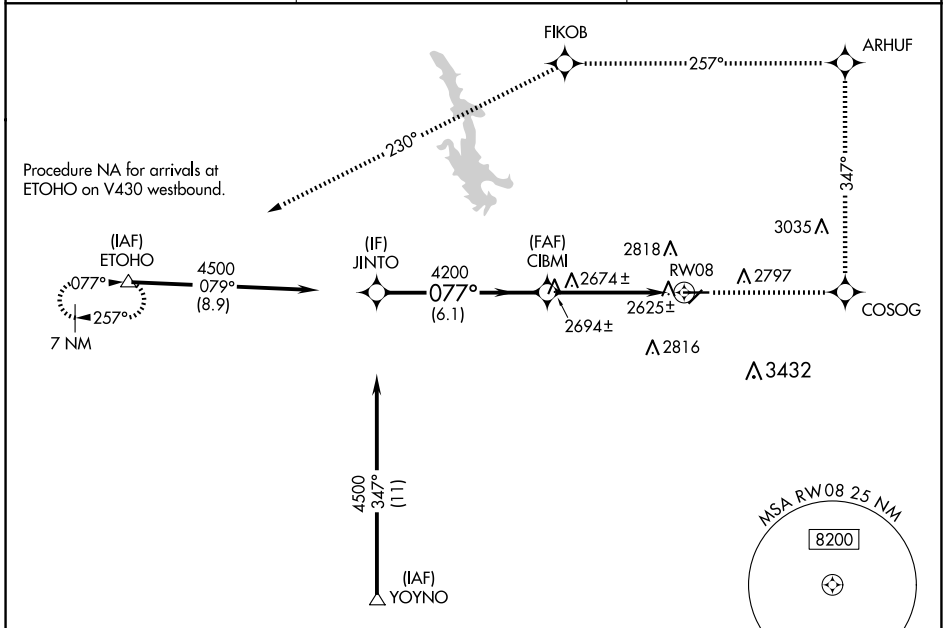
HAVRE CITY-COUNTY (HVR)

RNP APCH-GPS.

**⚠** For uncompensated Baro-VNAV systems,  
**⚠** LNAV/VNAV NA below -20°C or above 54°C.

MISSED APPROACH: Climb to 8000 direct COSOG and left on track 347° to ARHUF and left turn on track 257° to FIKOB and on track 230° to ETOHO and hold.

ASOS <b>135.225</b>	SALT LAKE CENTER <b>133.4 285.4</b>	UNICOM <b>122.8 (CTAF)</b> <b>0</b>
------------------------	--	--

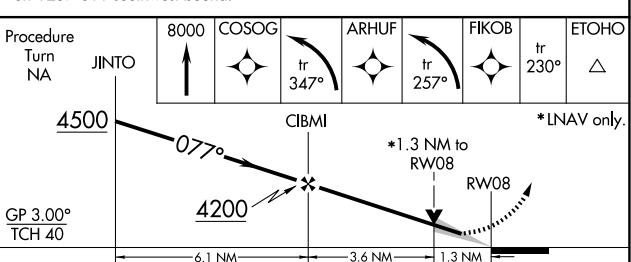
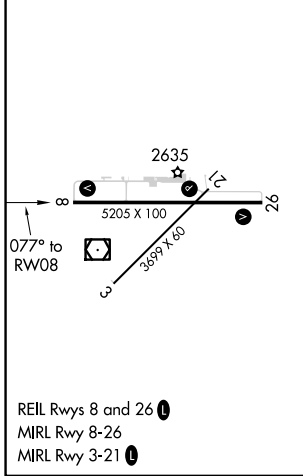


NW-1, 23 JAN 2025 to 20 FEB 2025

NW-1, 23 JAN 2025 to 20 FEB 2025

ELEV 2591	<b>D</b>	TDZE 2585
-----------	----------	-----------

Procedure NA for arrivals at YOYNO on V257-611 southwest bound.



CATEGORY	A	B	C	D
LPV DA	2835-1 250 (300-1)			
LNAV/VNAV DA	2906-1¼ 321 (400-1¼)			
LNAV MDA	3020-1	435 (500-1)	3020-1¼ 435 (500-1¼)	3020-1½ 435 (500-1½)
CIRCLING	3080-1 489 (500-1)	3120-1 529 (600-1)	3360-2¼ 769 (800-2¼)	3740-3 1149 (1200-3)