

WAAS CH 58019 W09A	APP CRS 091°	Rwy Idg 5002 TDZE 902 Apt Elev 902
--	------------------------	---

RNAV (GPS) RWY 9

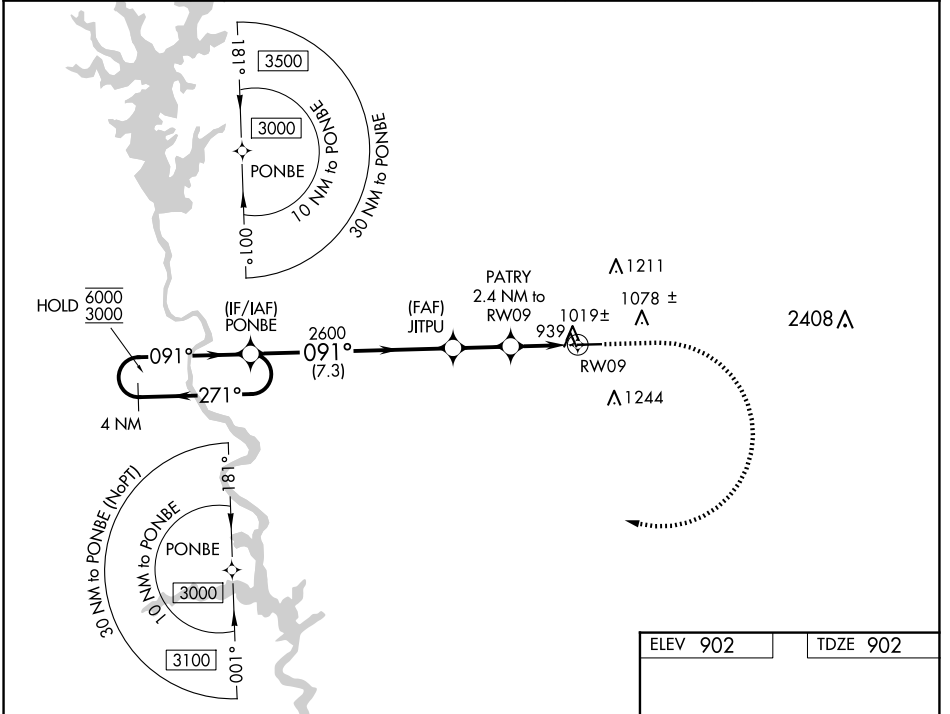
HARRIS COUNTY (PIM)

RNP APCH - GPS.

⚠ Circling Rwy 27 NA at night. Rwy 9 helicopter visibility reduction below 3/4 SM NA. For uncompensated Baro-VNAV systems, LNAV/VNAV NA below -16°C or above 48°C.

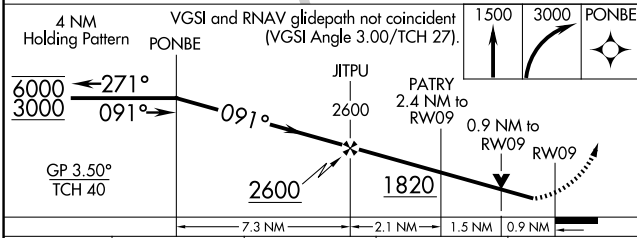
MISSED APPROACH: Climb to 1500 then climbing right turn to 3000 direct PONBE and hold.

AWOS-3PT 120.275	ATLANTA APP CON* 125.5 323.1	CLNC DEL 127.7	GCO 121.725	UNICOM 122.8 (CTAF) 0
----------------------------	--	--------------------------	-----------------------	---------------------------------



SE-4, 23 JAN 2025 to 20 FEB 2025

SE-4, 23 JAN 2025 to 20 FEB 2025



ELEV 902	TDZE 902
----------	----------

GP 3.50° TCH 40	1500	3000	PONBE
--------------------	------	------	-------

MIRL Rwy 9-27 0

CATEGORY	A	B	C	D
LPV DA		1213-7/8	311 (400-7/8)	
LNAV/VNAV DA		1245-1	343 (400-1)	
LNAV MDA		1280-1	378 (400-1)	
C CIRCLING	1320-1 418 (500-1)	1440-1 538 (600-1)	1700-2 1/4 798 (800-2 1/4)	1820-3 918 (1000-3)