


WAAS CH 56213 W24A	APP CRS 244°	Rwy ldg TDZE Apt Elev	5130 817 823
--	------------------------	-----------------------------	---

RNAV (GPS) RWY 24

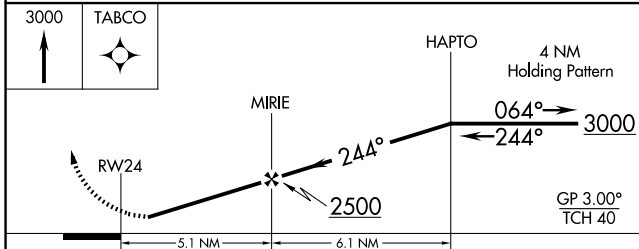
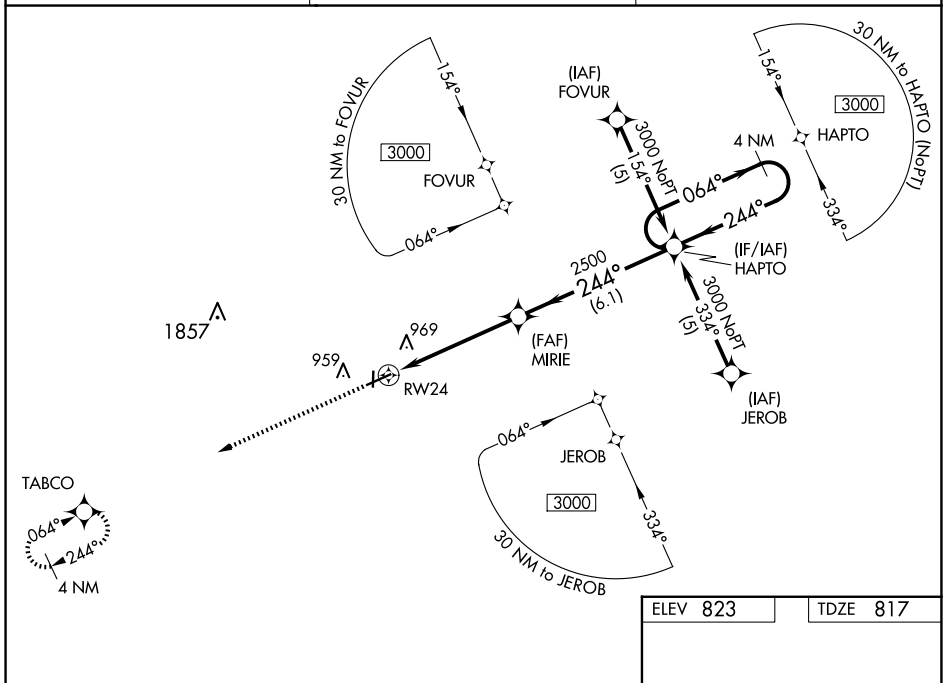
MEXICO MEML (MYJ)

NA Helicopter visibility reduction below 3/4 SM NA. Inoperative table does not apply. DME/DME RNP-0.3 NA. For uncompensated Baro-VNAV systems, LNAV/VNAV NA below -16°C (4°F) or above 54°C (130°F). When local altimeter setting not received, use Columbia Rgnl altimeter setting; increase LPV DA to 1200 feet; increase LNAV/VNAV DA to 1352 feet; increase all MDAs 80 feet and Circling visibility Cat C 1/2 SM. Baro-VNAV NA when using Columbia Rgnl altimeter setting.

MALS 

MISSED APPROACH: Climb to 3000 direct TABCO and hold.

AWOS-3PT 120.575	MIZZU APP CON 124.375	CTAF 122.9
----------------------------	---------------------------------	----------------------



ELEV 823	TDZE 817
----------	----------

CATEGORY	A	B	C	D
LPV DA	1126-1	309 (400-1)		NA
LNAV/VNAV DA	1278-1 3/4	461 (500-1 3/4)		NA
LNAV MDA	1220-1	403 (400-1)	1220-1 1/4 403 (400-1 1/4)	NA
CIRCLING	1280-1	457 (500-1)	1420-1 1/2 597 (600-1 1/2)	NA

This diagram shows the REIL Rwy 18 and MRL Rwy 6-24 and 18-36. The REIL Rwy 18 has a 3200 x 50 ft width and a 0.3% UP slope. The MRL Rwy 6-24 and 18-36 has a 5501 x 100 ft width. The diagram also shows a 36 ft width and a 244° heading.

NC-3, 23 JAN 2025 to 20 FEB 2025

NC-3, 23 JAN 2025 to 20 FEB 2025