

WAAS CH 97423 W06A	APP CRS 064°	Rwy Idg TDZE Apt Elev	5301 822 823
----------------------------------------	------------------------	-----------------------------	-----------------------------------------

RNAV (GPS) RWY 6

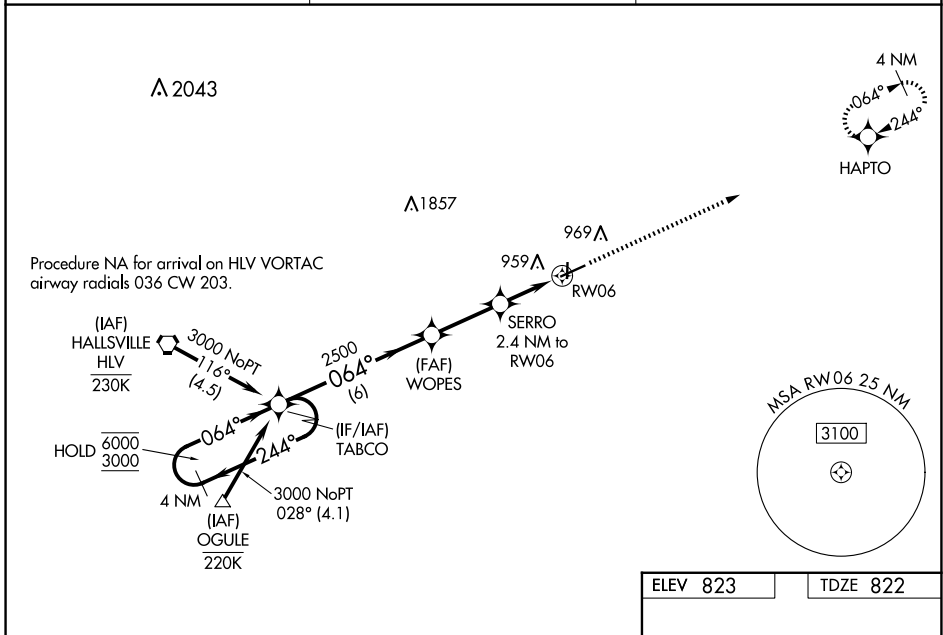
MEXICO MEML (MYJ)

RNP APCH - GPS.

NA Baro-VNAV and VDP NA when using Columbia altimeter setting. For uncompensated Baro-VNAV systems, LNAV/VNAV NA below -16°C or above 54°C. When local altimeter setting not received, use Columbia altimeter setting; increase LPV DA to 1146 feet and visibilities 1/4 SM; increase LNAV/VNAV DA to 1167 feet and visibilities 1/8 SM; increase all MDAs 80 feet and LNAV visibility Cat C 3/8 SM and Circling visibility Cat C 1/2 SM.

MISSED APPROACH: Climb to 3000 direct HAPTO and hold.

AWOS-3PT 120.575	MIZU APP CON 124.375	CTAF 122.90
----------------------------	--------------------------------	-----------------------



4 NM Holding Pattern		TABCO	WOPES	SERRO 2.4 NM to RW06	3000 HAPTO
6000	←244°	→064°	2500	1.1 NM to RW06	
3000			1640	1.4 NM	
GP 3.00°				1.1 NM	
TCH 40					
		6 NM	2.7 NM	1.4 NM	1.1 NM
CATEGORY	A	B	C	D	
LPV DA		1072-3/4	250 (300-3/4)	NA	
LNAV/VNAV DA		1093-7/8	271 (300-7/8)	NA	
LNAV MDA		1200-1	378 (400-1)	NA	
CIRCLING	1280-1	457 (500-1)	1420-1 1/2	597 (600-1 1/2)	NA

ELEV 823	TDZE 822
REIL Rwy 18 0	
MIRL Rwy 6-24 and 18-36 0	

NC-3, 23 JAN 2025 to 20 FEB 2025

NC-3, 23 JAN 2025 to 20 FEB 2025