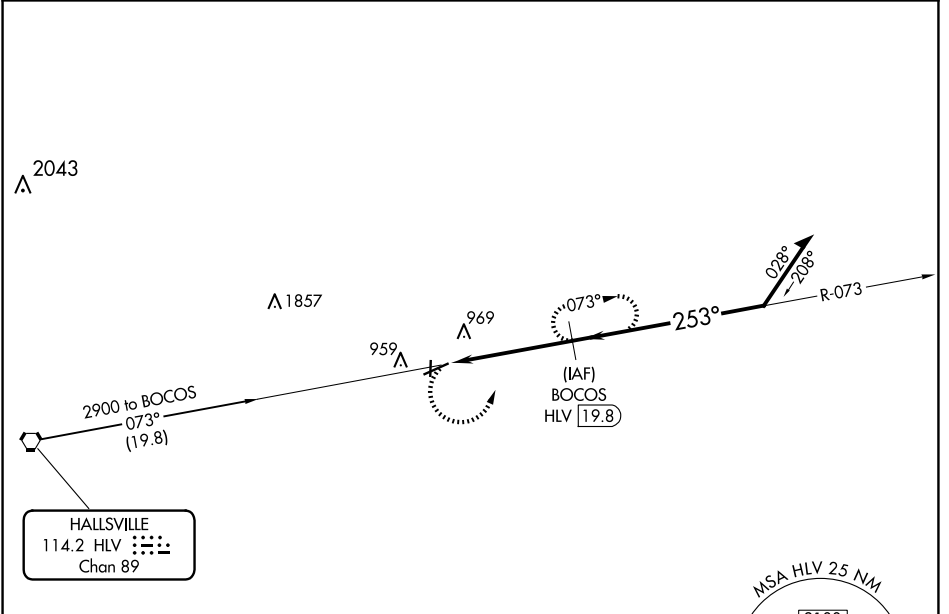


| | | |
|--|------------------------|---|
| VORTAC HLV 114.2 Chan 89 | APP CRS 253° | Rwy Idg 5130 TDZE 817 Apt Elev 823 |
|--|------------------------|---|

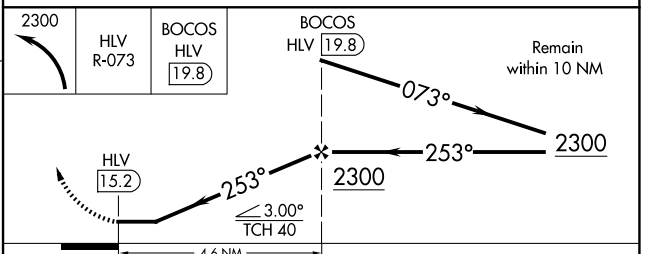
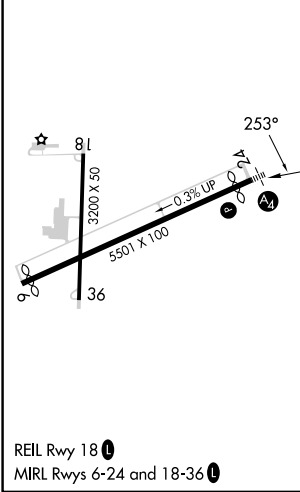
VOR/DME RWY 24

MEXICO MEML (MYJ)

| | | |
|---|--|----------------------|
| <p>⚠ NA Helicopter visibility reduction below $\frac{3}{4}$ SM NA. When local altimeter setting not received, use Columbia Rgnl altimeter setting and increase all MDAs 80 feet, increase S-24 visibility Cat C $\frac{1}{8}$ SM and Circling visibility Cat C $\frac{1}{2}$ SM. Inop table does not apply.</p> | <p>MALS </p> <p>MISSED APPROACH: Climbing left turn to 2300 via HLV R-073 to BOCOS/19.8 DME and hold.</p> | |
| AWOS-3PT 120.575 | MIZZU APP CON 124.375 | CTAF 122.9 |



| | |
|-----------------|-----------------|
| ELEV 823 | TDZE 817 |
|-----------------|-----------------|



| CATEGORY | A | B | C | D |
|----------|--------|-------------|-------------------------|----|
| S-24 | 1220-1 | 403 (400-1) | 1220-1¼ 403 (400-1¼) | NA |
| CIRCLING | 1280-1 | 457 (500-1) | 1420-1½ 597 (600-1½) | NA |

NC-3, 23 JAN 2025 to 20 FEB 2025

NC-3, 23 JAN 2025 to 20 FEB 2025