

APP CRS 214°	Rwy Idg 5000
	TDZE 48
	Apt Elev 48

RNAV (GPS) RWY 21

ACCOMACK COUNTY (MFLV)

RNP APCH - GPS.

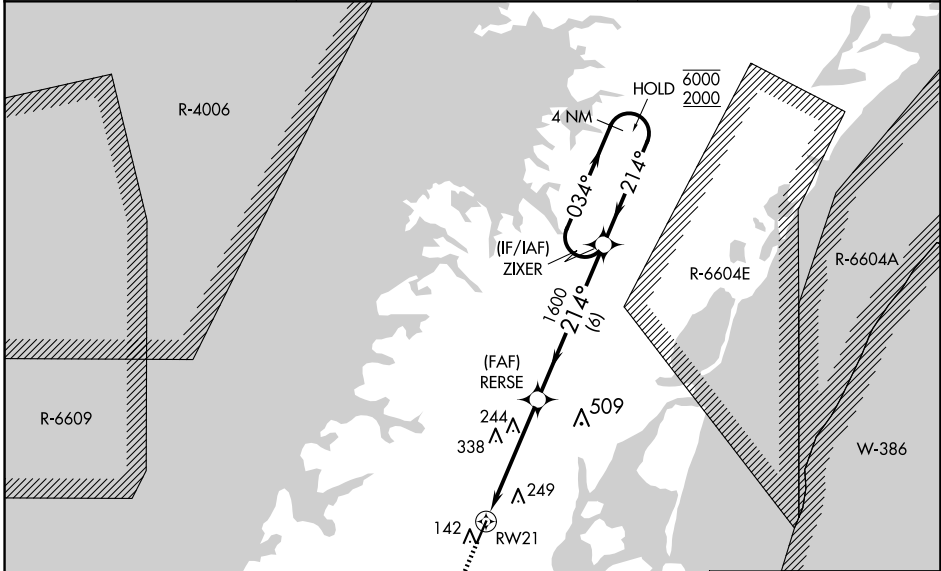
⚠ Rwy 21 helicopter visibility reduction below 3/4 SM NA.

MISSED APPROACH: Climb to 2000 direct UCGEL and hold.

AWOS-3
118.175

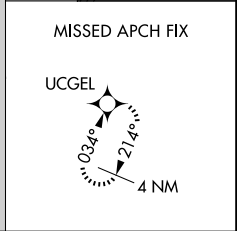
PATUXENT APP CON *
127.95 314.0

UNICOM
122.8 (CTAF) 0

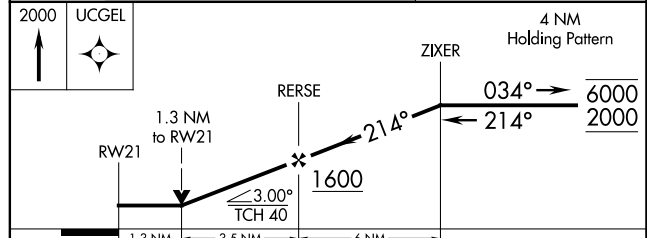
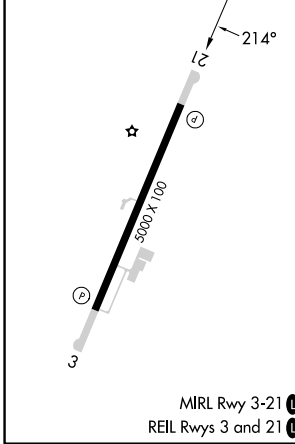


Procedure NA for arrivals at OUTLA on T303 southbound and T307 southwest bound.

2000 to ZIXER (32.4)



ELEV 48 TDZE 48



CATEGORY	A	B	C	D
LNVA MDA	500-1	452 (500-1)	500-1 3/8	452 (500-1 3/8)
CIRCLING	500-1	560-1	700-1 3/4	700-2
	452 (500-1)	512 (600-1)	652 (700-1 3/4)	652 (700-2)

NE-3, 23 JAN 2025 to 20 FEB 2025

NE-3, 23 JAN 2025 to 20 FEB 2025