

| | | | |
|--|------------------------|-----------------------------|---|
| WAAS CH 56522 W19A | APP CRS 190° | Rwy Idg TDZE Apt Elev | 5001 1245 1255 |
|--|------------------------|-----------------------------|---|

RNAV (GPS) RWY 19

NEOSHO HUGH ROBINSON (E/O S)

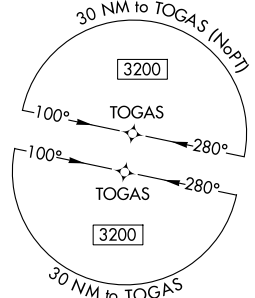
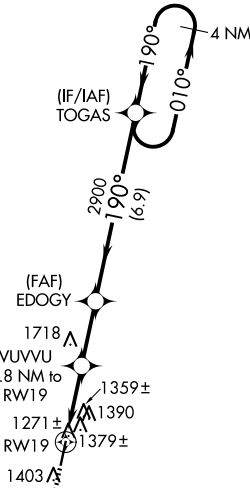
⚠ When VGSJ inop, Circling Rwy 1 NA at night. For uncompensated Baro-VNAV systems, LNAV/VNAV NA below -17°C (2°F) or above 54°C (130°F). DME/DME RNP-0.3 NA. Visibility reduction by helicopters NA. When local altimeter setting not received, use Joplin altimeter setting and increase all DA 87 feet and all MDA 100 feet; increase LPV all Cats visibility 1/8 mile, LNAV/VNAV all Cats visibility 3/8 mile, and LNAV Cat C visibility 1/2 mile. VDP and Baro-VNAV NA when using Joplin altimeter setting.

MISSED APPROACH: Climb to 3300 direct RUKOC and hold.

KANSAS CITY CENTER
128.6 282.325

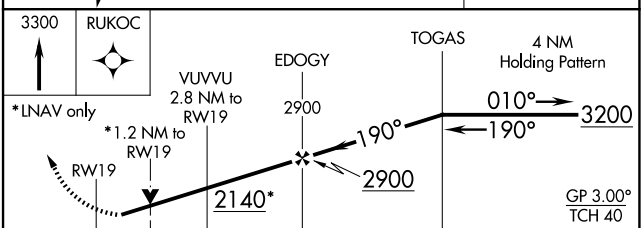
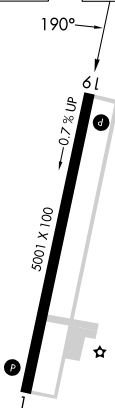
AUNICOM
122.8(CTAF) 0

△ 2056



△ 1581

ELEV 1255 TDZE 1245



| CATEGORY | A | B | C | D |
|--------------|-----------------------|-----------------------|-------------------------|----|
| LPV DA | 1495-1 | 250 (300-1) | | NA |
| LNAV/VNAV DA | 1692-1½ | 447 (500-1½) | | NA |
| LNAV MDA | 1640-1 | 395 (400-1) | 1640-1¼ 395 (400-1¼) | NA |
| CIRCLING | 1720-1 465 (500-1) | 1740-1 485 (500-1) | 1740-1½ 485 (500-1½) | NA |

REIL Rwy 1 and 19
MIRL Rwy 1-19