

WAAS CH 82707 W30B	APP CRS 295°	Rwy Idg TDZE 9000 5599 Apt Elev 5673
---------------------------------	------------------------	---

RNAV (GPS) RWY 30R

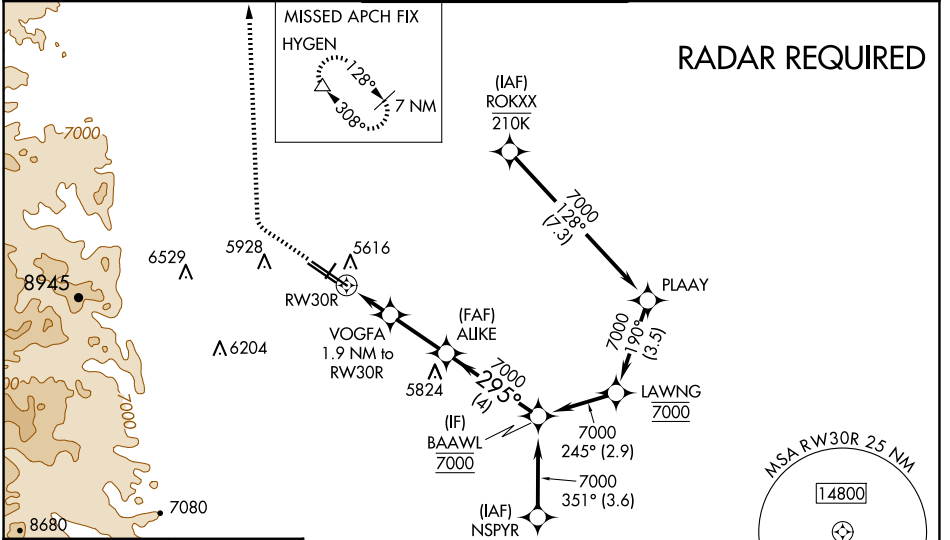
ROCKY MOUNTAIN METRO (BJC)

NA Baro-VNAV and VDP NA when using Denver Intl altimeter setting. For uncompensated Baro-VNAV systems, LNAV/VNAV NA below -26°C (-14°F) or above 47°C (116°F). DME/DME RNP-0.3 NA. When local altimeter setting not received, use Denver Intl altimeter setting and increase all DA 82 feet and all MDA 100 feet, increase LNAV/VNAV all Cats, LNAV Cat C/D and Circling Cat C visibility 1/4 mile. For inoperative MALSR, increase LNAV/VNAV all Cats visibility to 1 1/8 mile and LNAV Cat C/D visibility to 1 mile. For inoperative MALSR, when using Denver Intl altimeter setting, increase LPV all Cats visibility to 1 mile, LNAV/VNAV all Cats visibility to 1 1/8 mile and LNAV Cat A/B visibility to 1 mile and Cat C/D visibility to 1 1/8 mile.

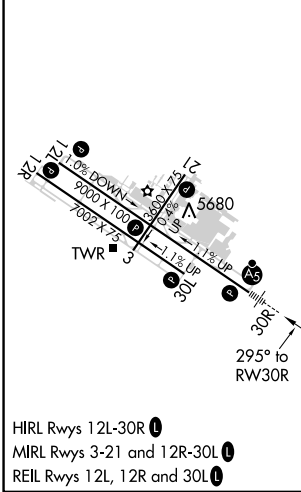
MALSR

MISSED APPROACH: Climb to 6300 then climbing right turn to 10300 direct HYGEN and hold, continue climb-in-hold to 10300.

ATIS 126.25	DENVER APP CON 125.12 263.02	METRO TOWER ★ 118.6 (CTAF) 233.7	GND CON 121.7	CLNC DEL 132.6
-----------------------	--	--	-------------------------	--------------------------



ELEV 5673	D	TDZE 5599
-----------	----------	-----------



DENVER, COLORADO
Amdt 2 13NOV14

6300	10300	HYGEN	ALIJE	BAOWL
↑	↷	△	7000	7000
*LNAV only.		VOGFA 1.9 NM to RW30R	7000	7000
RW30R		*1 NM to RW30R	295°	7000
-1 NM - 0.9		2.4 NM	4 NM	GP 3.00° TCH 52

CATEGORY	A	B	C	D
LPV DA		5799-1/2	200 (200-1/2)	
LNAV/VNAV DA		5900-5/8	301 (300-5/8)	
LNAV MDA	5940-1/2	341 (300-1/2)	5940-5/8	341 (300-5/8)
C CIRCLING	6180-1 507 (600-1)	6240-1 567 (600-1)	6360-2 687 (700-2)	6860-3 1187 (1200-3)

SW-1, 23 JAN 2025 to 20 FEB 2025

SW-1, 23 JAN 2025 to 20 FEB 2025