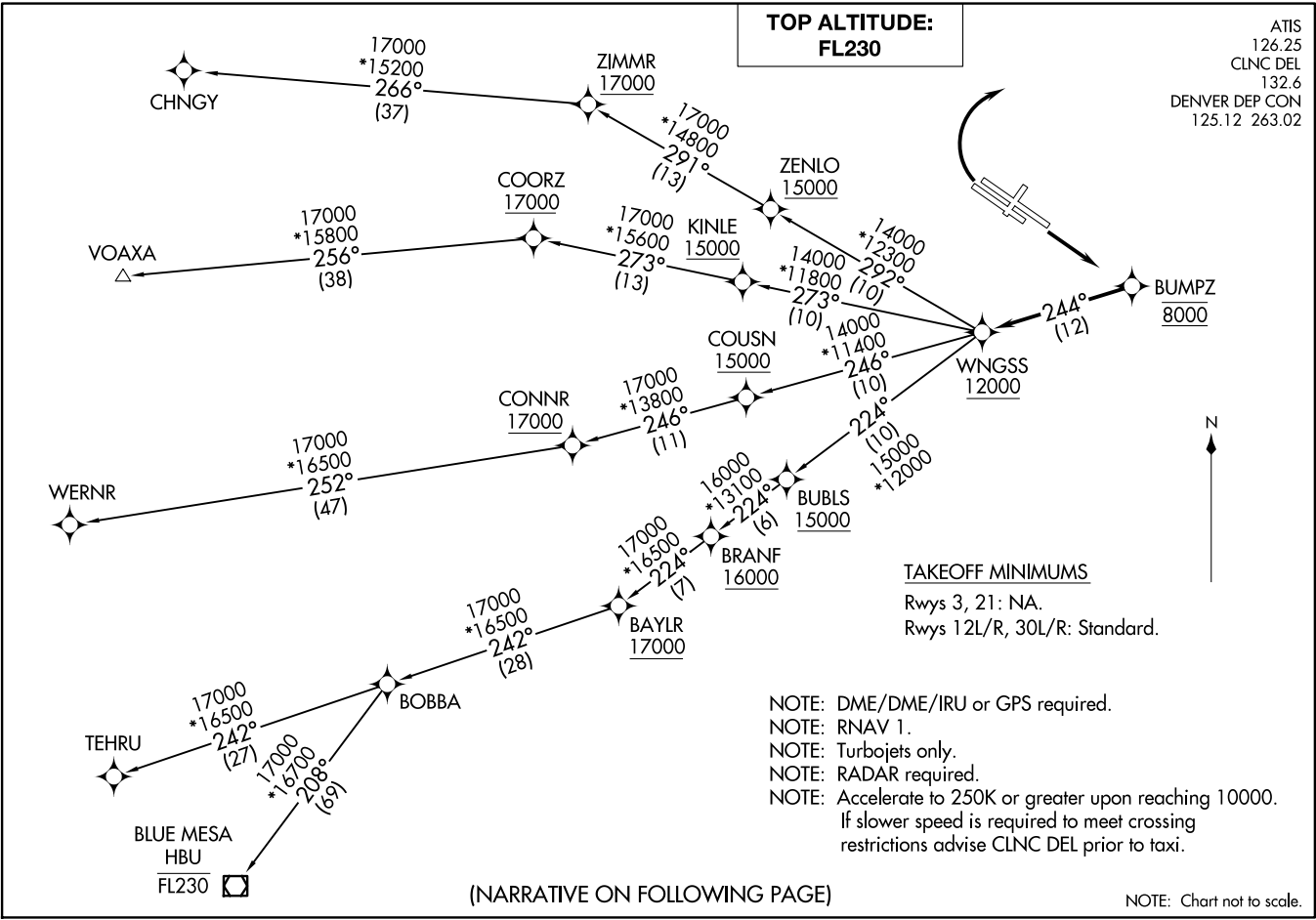


ATIS
 126.25
 CLNC DEL
 132.6
 DENVER DEP CON
 125.12 263.02

**TOP ALTITUDE:
 FL230**



NOTE: Chart not to scale.



DEPARTURE ROUTE DESCRIPTION

TAKEOFF RUNWAYS 12L/R: Climb on a heading between 350° CW 150° as assigned by ATC. Thence. . . .

TAKEOFF RUNWAYS 30L/R: Climbing right turn on a heading between 350° CW 113° as assigned by ATC. Thence. . . .

. . . .expect RADAR vectors to cross BUMPZ at 8000 then on track 244° to cross WNGSS at or above 12000 then on (transition) maintain FL230 or filed lower altitude. Expect higher filed altitude ten minutes after departure.

BLUE MESA TRANSITION (WNGSS1.HBU)

CHNGY TRANSITION (WNGSS1.CHNGY)

TEHRU TRANSITION (WNGSS1.TEHRU)

VOAXA TRANSITION (WNGSS1.VOAXA)

WERNR TRANSITION (WNGSS1.WERNR)

SW-1, 23 JAN 2025 to 20 FEB 2025

SW-1, 23 JAN 2025 to 20 FEB 2025