

WAAS CH 93732 W32A	APP CRS 322°	Rwy Idg TDZE 1130 Apt Elev 1136
--	------------------------	---

RNAV (GPS) RWY 32

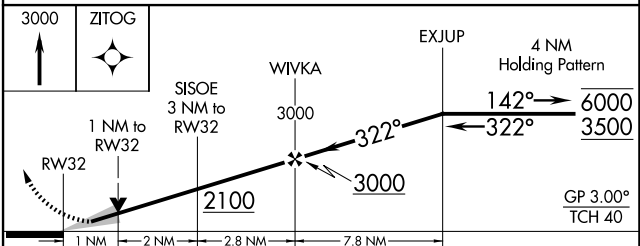
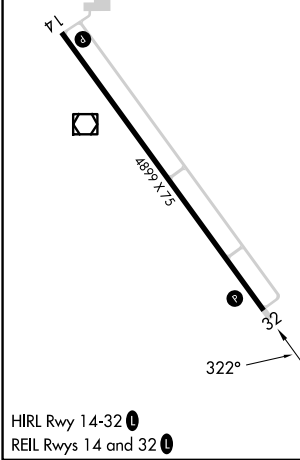
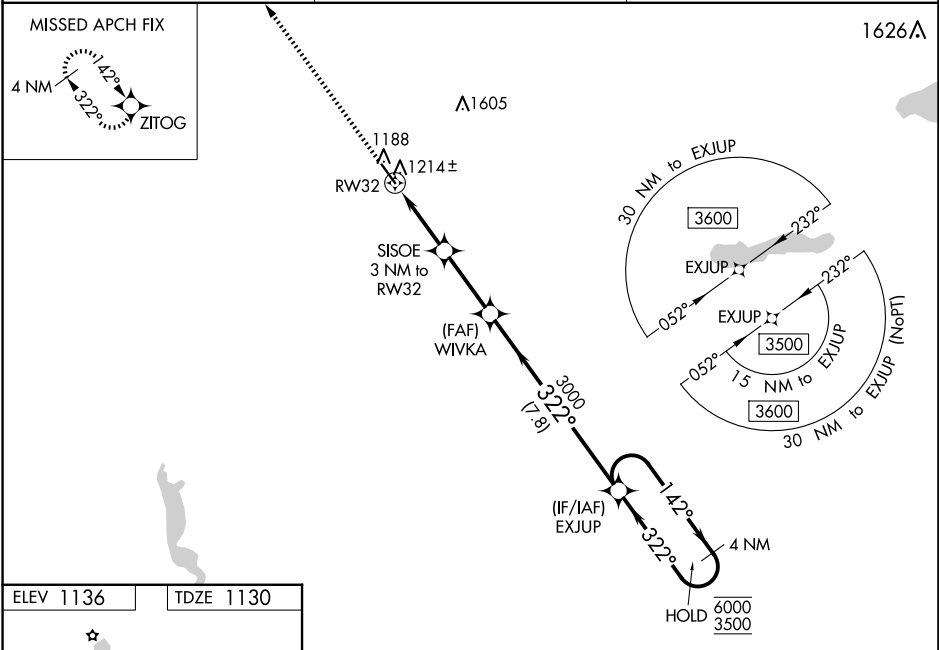
MORRIS MUNI/CHARLIE SCHMIDT FLD (MOX)

RNP APCH - GPS.

⚠ Baro-VNAV and VDP NA when using BBB altimeter setting. For uncompensated Baro-VNAV systems, LNAV/VNAV NA below -17°C or above 54°C. When local altimeter setting not received, use BBB altimeter setting and increase LPV DA to 1380 feet and LNAV/VNAV DA to 1477 feet. Increase all MDAs 60 feet and visibility LNAV Cat C ½ SM and visibility Circling Cat C ¼ SM.

MISSED APPROACH: Climb to 3000 direct ZITOG and hold.

AWOS-3PT 118.6	MINNEAPOLIS CENTER 126.1 269.2	UNICOM 122.8 (CTAF) 1
--------------------------	--	---------------------------------



CATEGORY	A	B	C	D
LPV DA		1330-1	200 (200-1)	NA
LNAV/VNAV DA		1419-1	289 (300-1)	NA
LNAV MDA		1480-1	350 (400-1)	NA
C CIRCLING	1560-1 424 (500-1)	1600-1 464 (500-1)	1860-2 724 (800-2)	NA

NC-1, 23 JAN 2025 to 20 FEB 2025

NC-1, 23 JAN 2025 to 20 FEB 2025