

WAAS CH <b>70427</b> <b>W27A</b>	APP CRS <b>274°</b>	Rwy Idg TDZE Apt Elev	<b>4003</b> <b>1312</b> <b>1312</b>
--	------------------------	-----------------------------	---

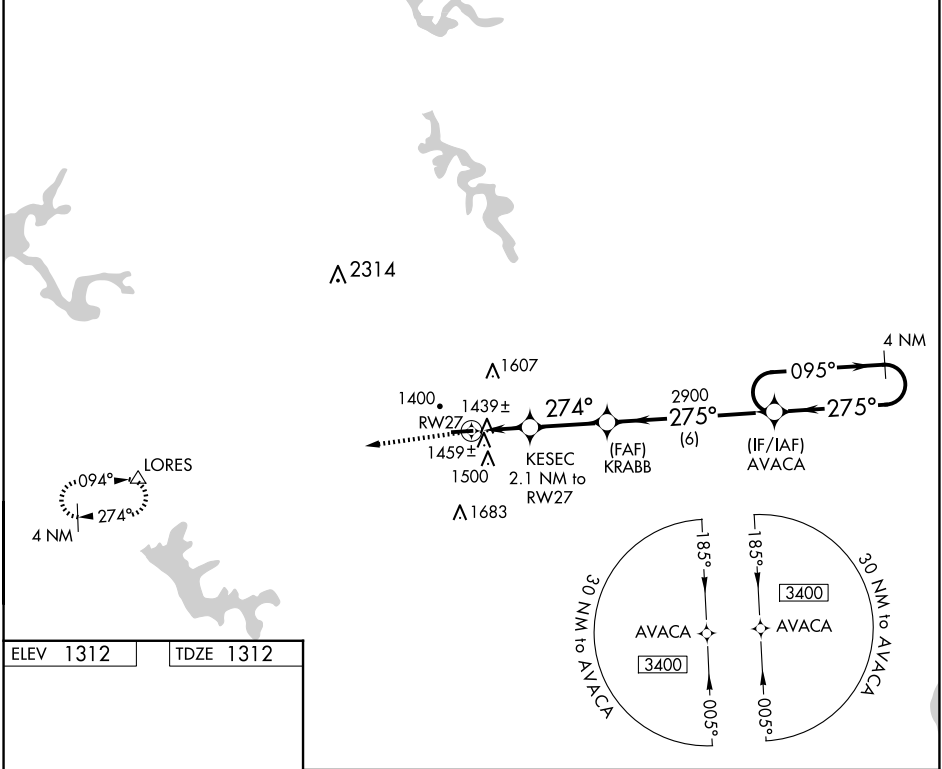
# RNAV (GPS) RWY 27

BARNESVILLE/BRADFIELD (6G5)

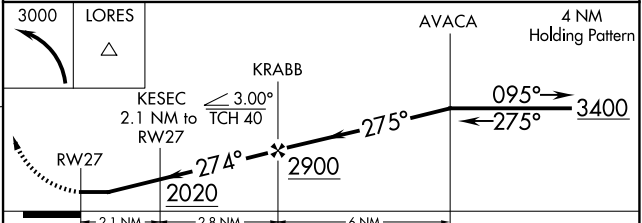
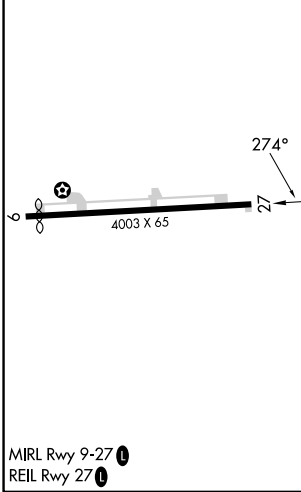
**NA** DME/DME RNP-0.3 NA. Procedure NA at night. Visibility reduction by helicopters NA. Use Wheeling, WV altimeter setting; When not received use Washington, PA altimeter setting and increase all MDA 40 feet.

**MISSED APPROACH:** Climbing left turn to 3000 direct LORES and hold.

HLG ASOS <b>127.375</b>	CLEVELAND CENTER <b>126.95 239.30</b>	UNICOM <b>123.0 (CTAF)</b>
----------------------------	--	-------------------------------



ELEV <b>1312</b>	TDZE <b>1312</b>
------------------	------------------



CATEGORY	A	B	C	D
LP MDA	1780-1	468 (500-1)		NA
LNAV MDA	1800-1	488 (500-1)		NA
CIRCLING	1880-1 568 (600-1)	1940-1 628 (700-1)		NA

EC-2, 23 JAN 2025 to 20 FEB 2025

EC-2, 23 JAN 2025 to 20 FEB 2025