

WAAS CH 63225 W09A	APP CRS 092°	Rwy Idg TDZE Apt Elev	5505 915 925
--	------------------------	-----------------------------	---

RNAV (GPS) RWY 9

PORTLAND MUNI (PLD)

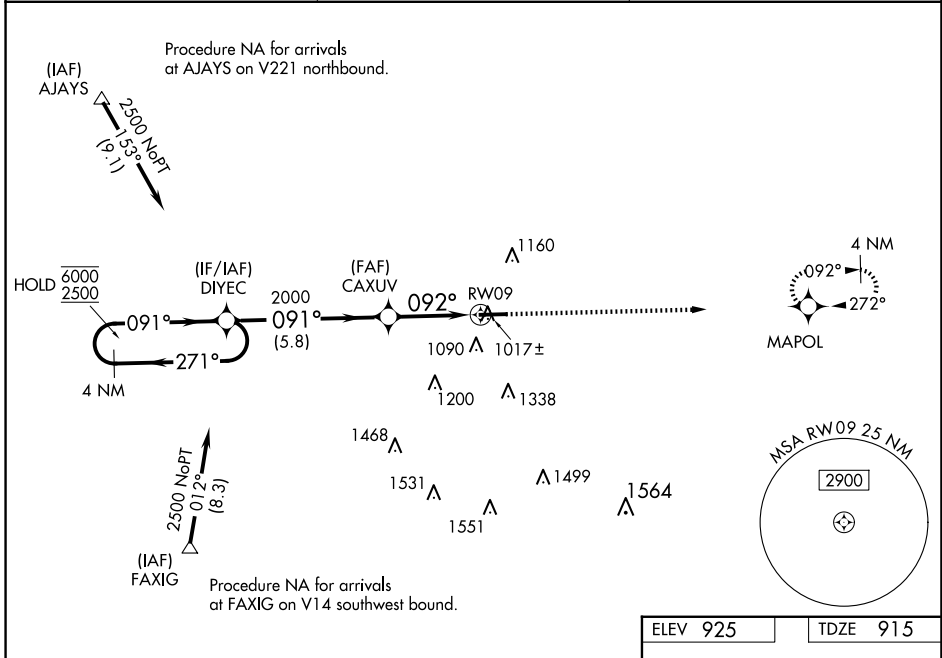
RNP APCH - GPS.

⚠ Circling to Rwy 27 NA at night. For uncompensated Baro-VNAV systems, LNAV/VNAV NA below -16°C or above 54°C.

MISSED APPROACH:
Climb to 3000 direct
MAPOL and hold.

AWOS-3 124.675	FORT WAYNE APP CON 132.15 (SE/NE) 284.6 127.2 (SW/NW) 284.6
--------------------------	---

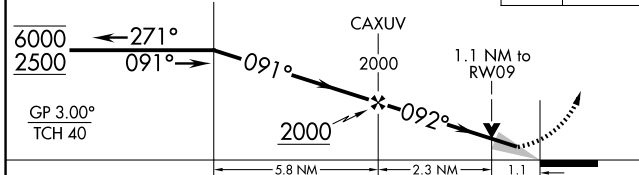
UNICOM
122.8 (CTAF) **0**



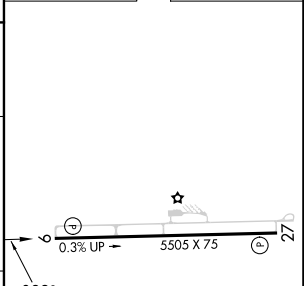
4 NM Holding Pattern

VGSI and RNAV glidepath not coincident (VGSI Angle 3.00/TCH 26).

3000 MAPOL



ELEV 925	TDZE 915
----------	----------



CATEGORY	A	B	C	D
LPV DA		1165-1	250 (300-1)	
LNAV/VNAV DA		1230-1	315 (400-1)	
LNAV MDA		1280-1	365 (400-1)	
CIRCLING	1480-1	555 (600-1)	1580-1¾ 655 (700-1¾)	1640-2¼ 715 (800-2¼)

MIRL Rwy 9-27 **0**

REIL Rwys 9 and 27 **0**

EC-2, 23 JAN 2025 to 20 FEB 2025

EC-2, 23 JAN 2025 to 20 FEB 2025