

(KAYLN3.KAYLN) 24137

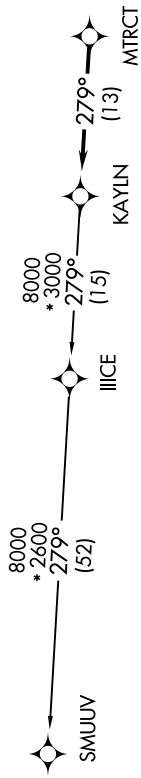
KAYLN THREE DEPARTURE (RNAV) AL-5642 (FAA)

CUSTER (TTF)
MONROE, MICHIGAN

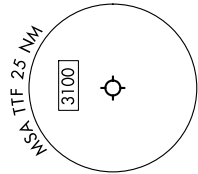
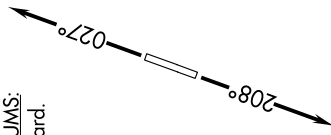
EC-1, 23 JAN 2025 to 20 FEB 2025

TOP ALTITUDE: ASSIGNED AT ATC	RNAV-1 DME/DME/IRU or GPS.
	RADAR required.

DETROIT DEP CON
134.3 284.0
AWOS-3
119.075
CTAF
122.7



TAKEOFF MINIMUMS:
Rwy 3, 21: Standard.



NOTE: Turbojet departures at/above 10000, maintain 280K until advised by ATC.

NOTE: Chart not to scale.

DEPARTURE ROUTE DESCRIPTION

TAKEOFF RUNWAY 3: Climb on heading 027° or as assigned by ATC, thence....
TAKEOFF RUNWAY 21: Climb on heading 208° or as assigned by ATC, thence....
for RADAR vectors to MTRCT, then on track 279° to KAYLN, then on (transition). Maintain ATC assigned altitude, expect filed altitude 10 minutes after departure.

SMUUV TRANSITION (KAYLN3.SMUUV):

KAYLN THREE DEPARTURE (RNAV)
(KAYLN3.KAYLN) 16MAY24

MONROE, MICHIGAN
CUSTER (TTF)

EC-1, 23 JAN 2025 to 20 FEB 2025