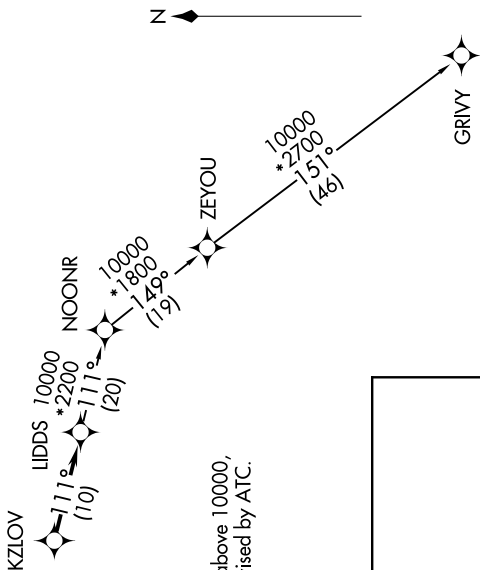


EC-1, 23 JAN 2025 to 20 FEB 2025

AWOS-3
119.075
CTAF
122.7
DETROIT DEP CON
134.3 284.0

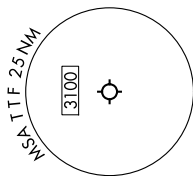


TAKEOFF MINIMUMS:
Rwys 3, 21: Standard.

NOTE: Turbojet departures at/above 10000,
maintain 280K until advised by ATC.

RNAV 1 - DME/DME/IRU or GPS.
RADAR required.

TOP ALTITUDE:
ASSIGNED BY ATC



DEPARTURE ROUTE DESCRIPTION

TAKEOFF RUNWAY 3: Climb on heading 027° or as assigned by ATC, thence....
 TAKEOFF RUNWAY 21: Climb on heading 208° or as assigned by ATC, thence....
for RADAR vectors to KZLOV, then on track 111° to LIDDS, then on (transition).
 Maintain ATC assigned altitude, expect filed altitude 10 minutes after departure.

GRIVY TRANSITION (LIDDS3.GRIVY):

NOTE: Chart not to scale.

EC-1, 23 JAN 2025 to 20 FEB 2025